



## NAS-8523DV

### IP Video Intercom Panel

SPON IP POE Video Intercom Station NAS-8523DV with a separate microphone and speaker, allowing full duplex one-way video conversations with IP Master Stations. It is equipped with two assignable call button which used for any indoor environment .

HD1080P

SIP

ONVIF

## MAIN FEATURES

### 1. Robust Design and Enhanced Security

- Durable 6mm aluminum panel with anti-stab protection and special screws to prevent vandalism.



### 2. Communication and Connectivity

- Built-in 1080P ultra-clear camera, 3W speaker, and microphone for hands-free calls.
- Line-output interface for connecting external speakers or earphones.
- Relay I/O interface for system linkage or access control.
- Supports offline calling with predefined targets on its web UI and one-press calling set via management software.

### 3. Network Integration and Protocol Support

- Standard SIP protocol compatibility for integration with mainstream SIP PBX systems (Yeastar, Asterisk, Cisco, etc.).
- IEEE 802.3af interface support for flexible deployment.



# SPECIFICATION

## POWER PARAMETERS

Power Supply: DC24V/1A、PoE IEEE802.3af

Standby Power Consumption: ≤3W

## AUDIO & VIDEO PARAMETERS

S/N (Signal-to-Noise Ratio): Broadcast-Speaker:81dB  
Broadcast-Line:88dB  
Line in-Record out:82dB

Audio Sampling & Bit Rate: 22.05KHz 16bit  
8kbps-320kbps

Video Transmission Bit Rate: 512Kbps-4Mbps

Video Coding: VGA/720P/1080P

Built-in Speaker(Power output): 3W

Built-in Speaker(Impedance): 8ohm

Built-in Mic: Electret Microphone

Built-in Mic(Sensitivity): -45±3dB

Built-in Mic(Directivity): Omnidirectional

Harmonic Distortion: <1%

Frequency Respinse: 40Hz~10KHz (WAV)  
50Hz~20KHz (MP3)

## NETWORK PARAMETERS

Network I/F: 10BASE-T/100BASE-TX RJ45

Network Protocol: TCP/IP、UDP、ARP、ICMP、  
IGMP、SIP、HTTP、FTP

Configuartion Method: Web Interface

## MECHANICAL&ENVIRONMENT PROPERTIES

Mounting Method: Wall-mounted

Installation Environment: Dry Indoor Locations

Operating Temperature: -20°C~55°C (-4°F~131°F)

Operating Humidity: ≤90% RH non-condensing

Body Material: Aluminium alloy

Color: Silver

Back Shell Material: Steel

Product Dimension: 101×191×46mm

Product Weight: 0.95 kg

Product Warranty: 2 Years

## ACCESSORIES

1×Power Adaptor(24V/1A)

4×Allen Screw(M3\*12)

1×Allen Wrench(2.5mm)

1×Wiring Terminal(3.5-2P)

1×Wiring Terminal(3.5-3P)

4×Half Round Head Philips Screw(ST4\*25)

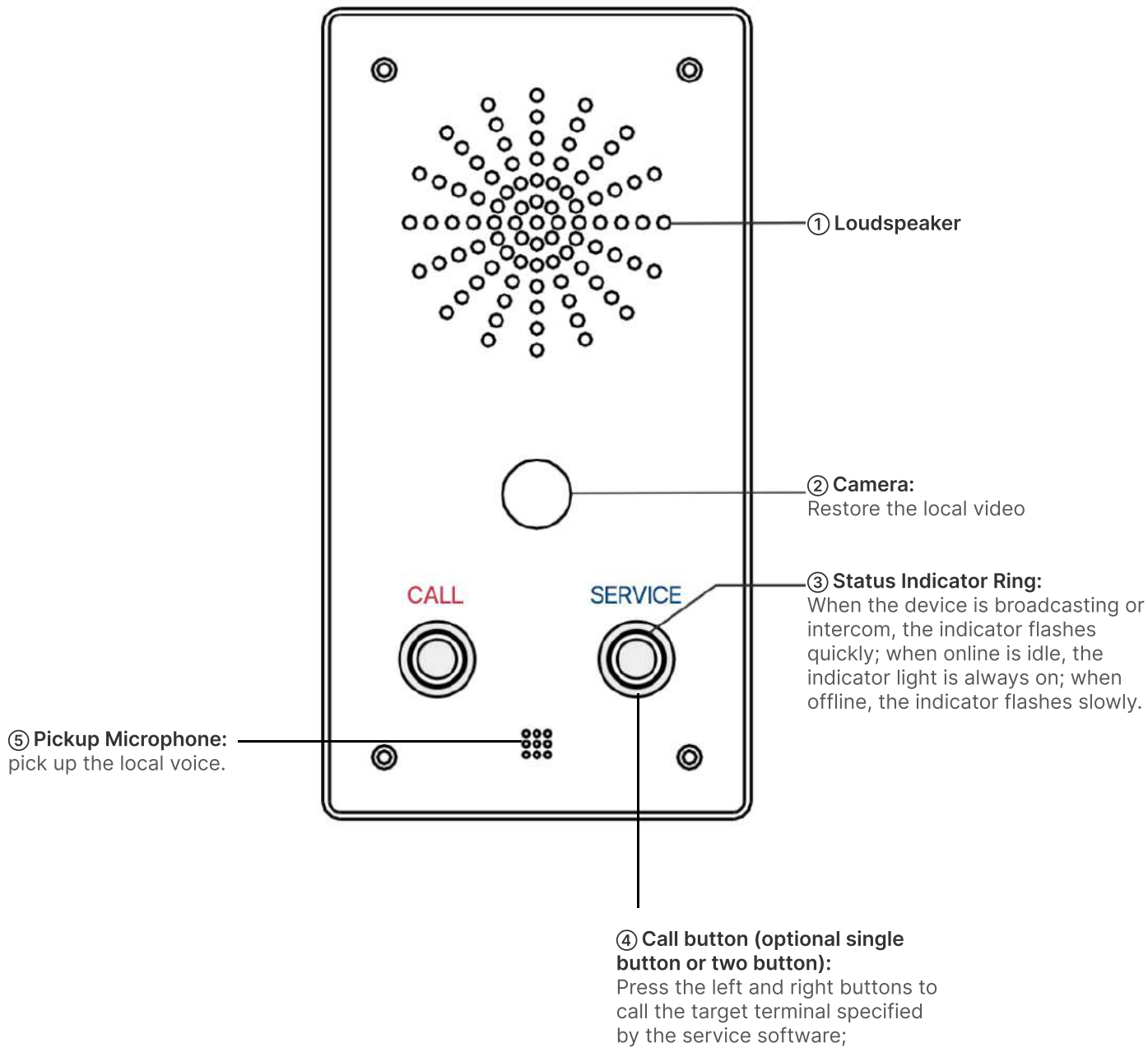
1×Red-Black Line(X2-80)

1×Red-White Line(X12-100)

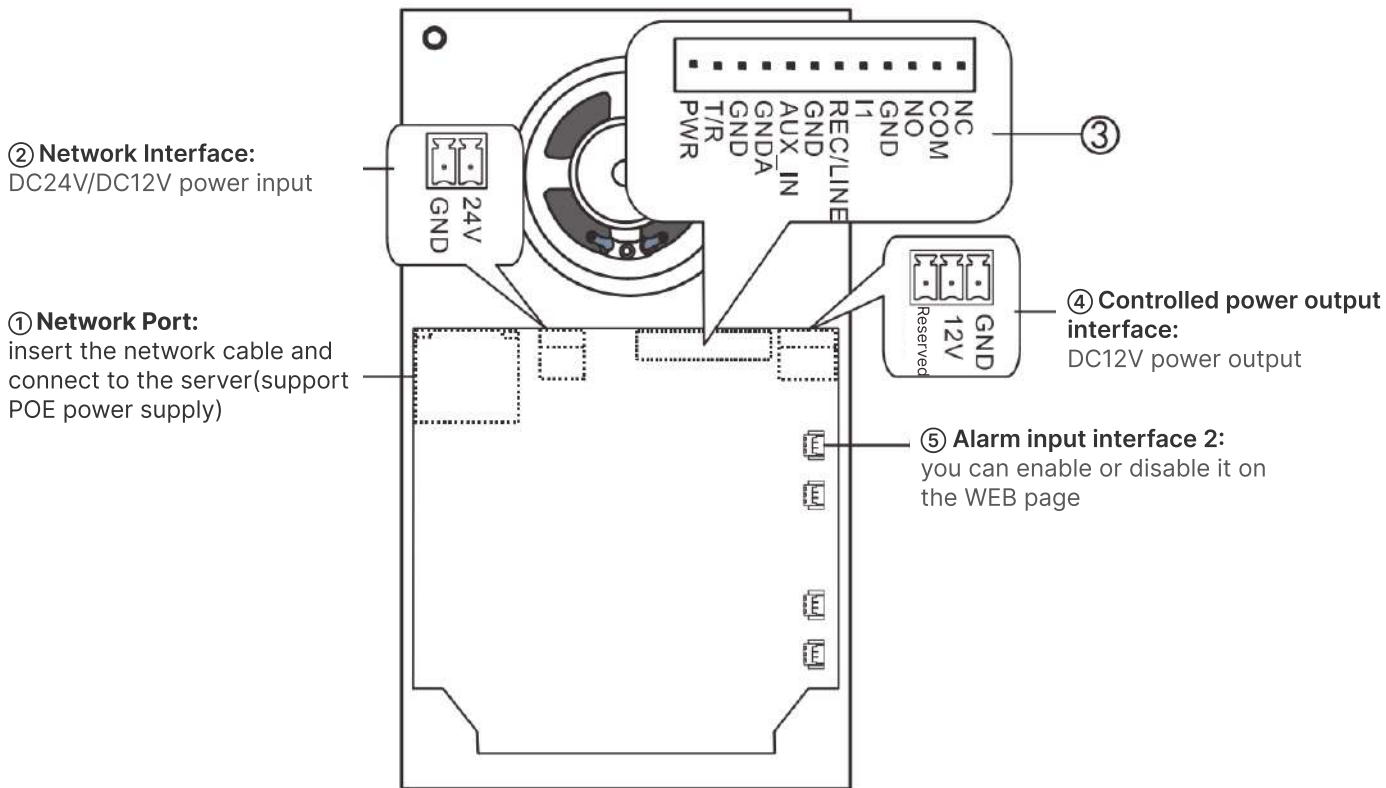
1×Quality Certificate&Warranty Card

1×Quick Installation Guide

## PORTS DESCRIPTION



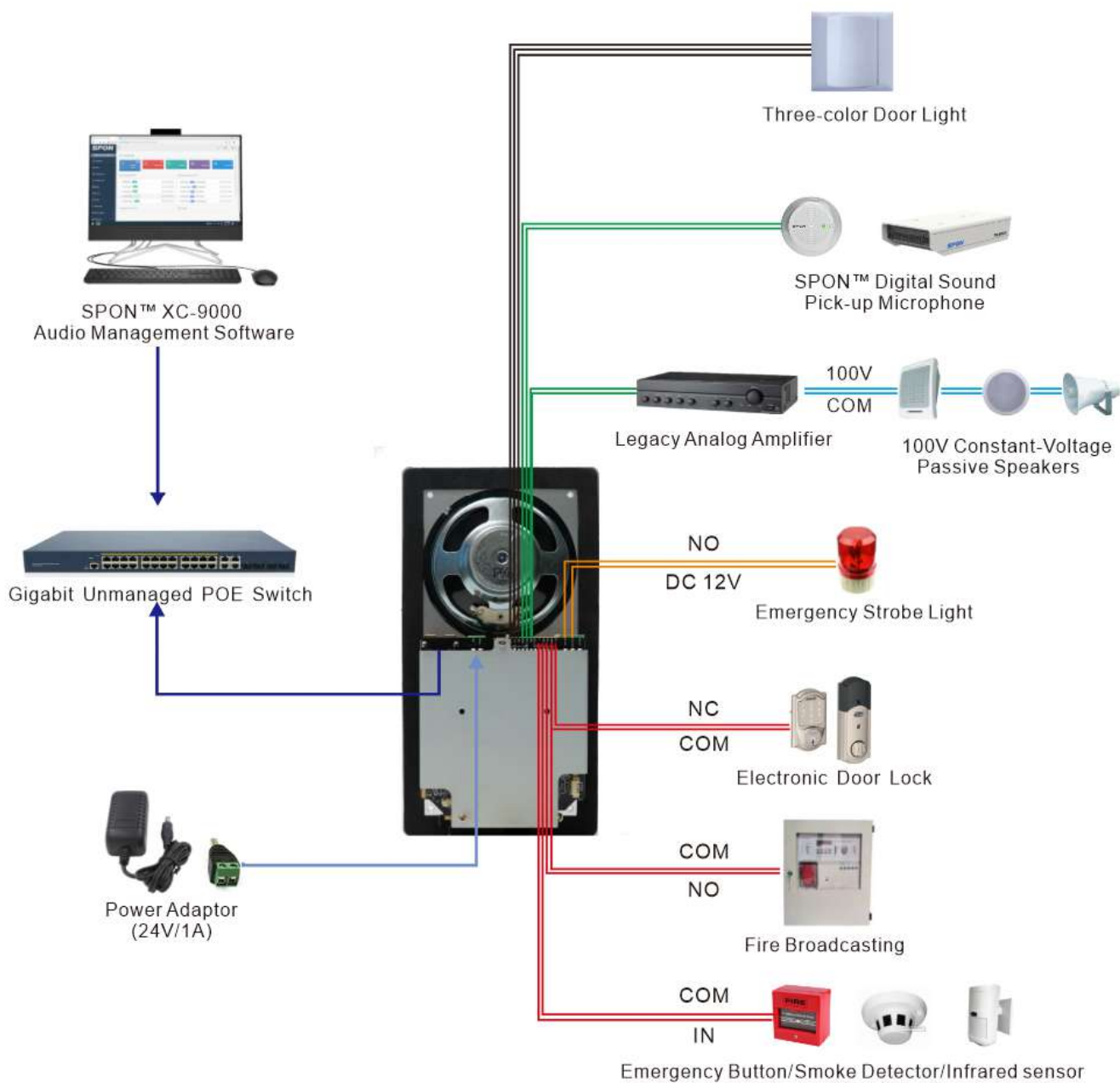
# PORTS DESCRIPTION



③ Comprehensive interface and function definition are shown in the figure below

■	NC	┌───┐	Alarm output (NC:normally closed,COM:COM,NO:normally open)
■	COM		
■	NO		
■	GND	┌───┐	Alarm input 1 (GND:Ground,L1:alarm input1)
■	I1		
■	REC/LINE	┌───┐	Record out/line out interface(REC/LINE:Signal,GND:ground)
■	GND		
■	AUX_IN	┌───┐	Line in interface(AUX_IN:Signal,GNDA:Analog ground)
■	GNDA		
■	GND	┌───┐	Three-color door light interface(GND:Ground,T/R:Signal,PWR:Power)
■	T/R		
■	PWR		

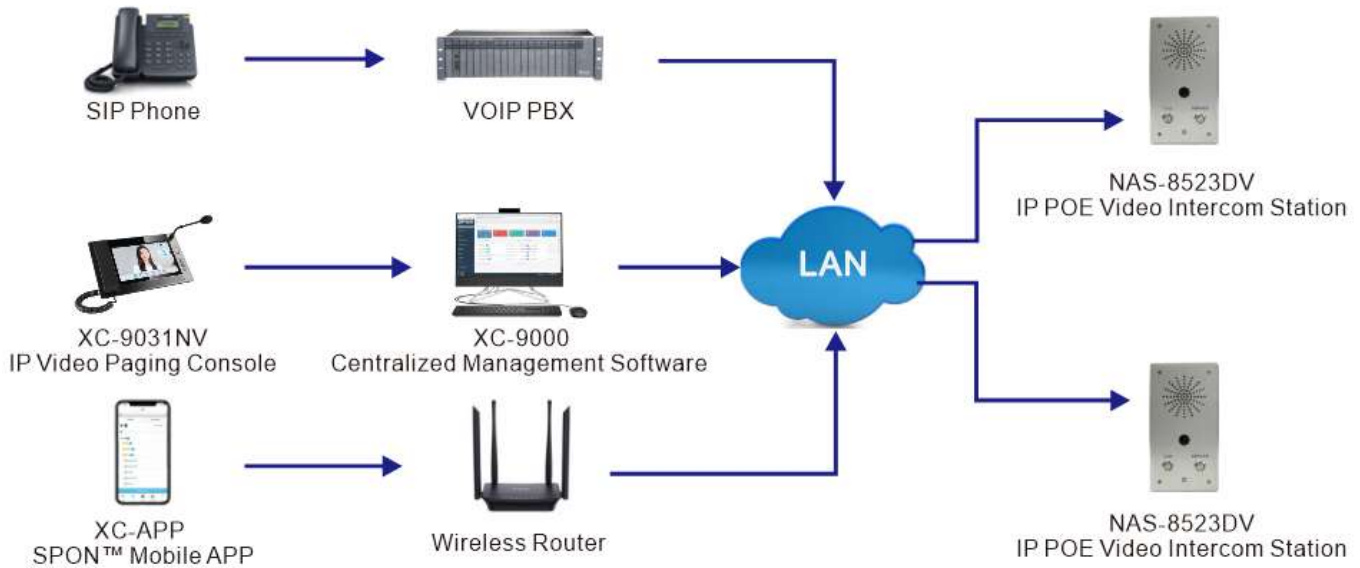
# CONNECTION DIAGRAM



# APPLICATIONS

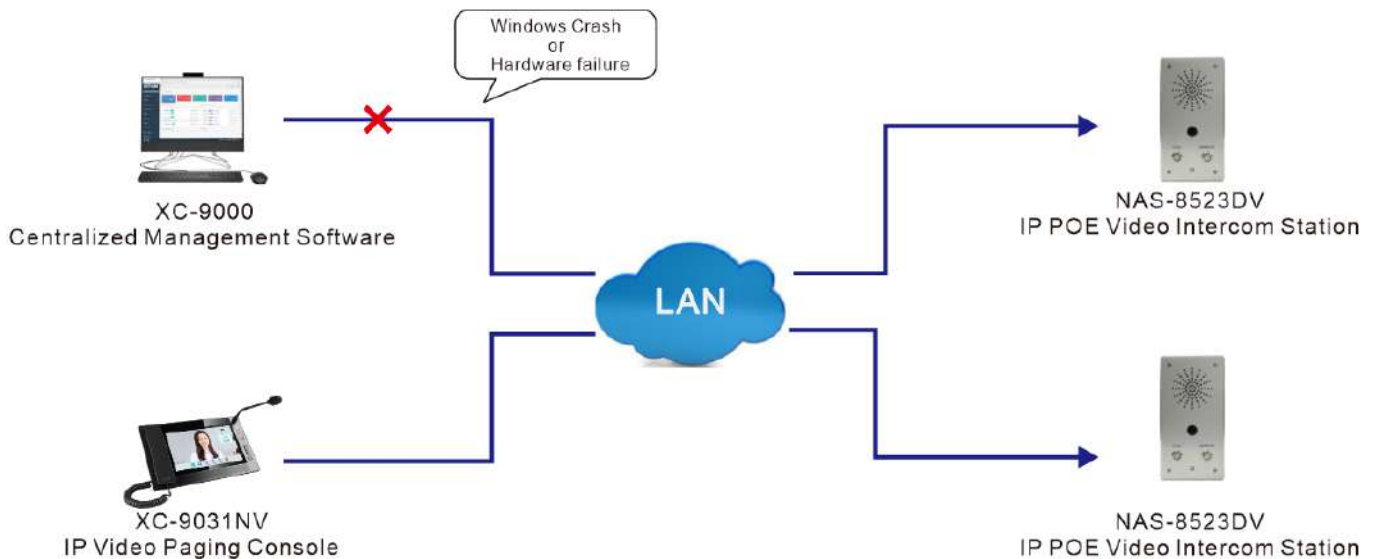
## Application 1

The IP POE Video Intercom Station NAS-8523DV support SIP protocol which can be independently used as a sip endpoint to integrated with mainstream VOIP system for receiving sip call from SIP phone or SIP softphone ; Meanwhile , it also can receive call from SPON IP paging microphone or mobile APP under the SPON management software .



## Application 2

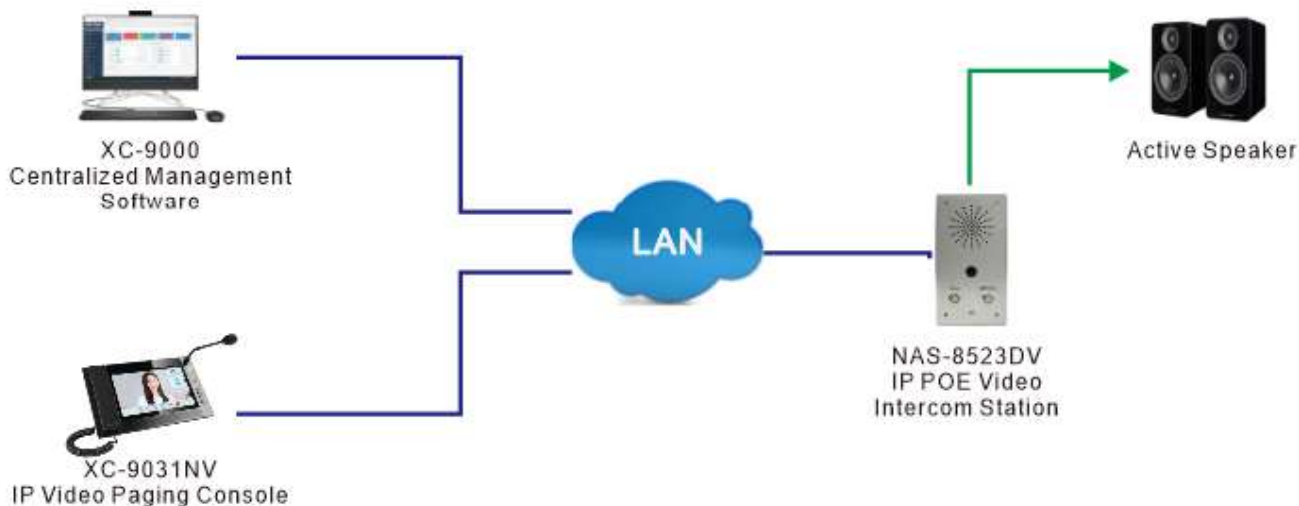
The IP POE Video Intercom Station NAS-8523DV support offline intercom function , it can receive and initiate offline calling without centralized software , the offline call target can be set on its webpage.



# APPLICATIONS

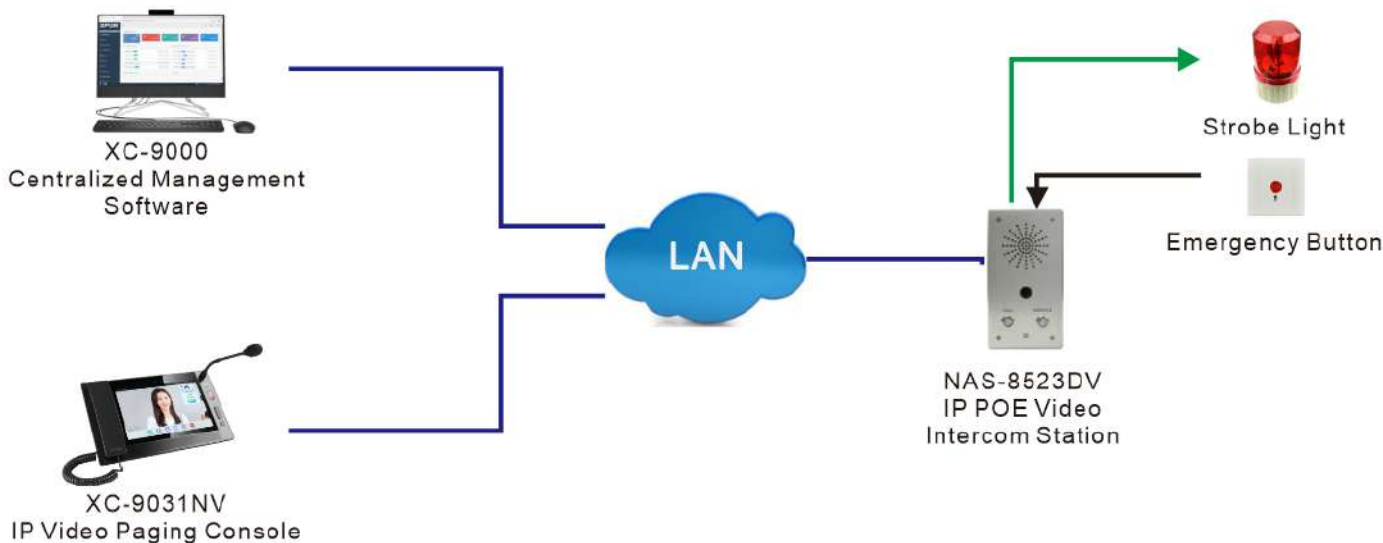
## Application 3

The IP POE Video Intercom Station NAS-8523DV with built-in speaker and line output interface which can receive broadcasting from IP paging mic or Centralized management software , user can choose the sound out from built-in speaker or external active speaker.



## Application 4

The IP POE Video Intercom Station NAS-8523DV with relay I/O interface which can be connect with emergency button or smoke detector 、strobe light or electronic door lock . During intercom call , the relay ouput can be triggered by the remote IP paging mic .User aslo can set the task of triggering the automatic call through the emergency button in the software.





## DIMENSION DRAWING

### Installation instructions

First use 4 plastic expansion sleeves and round head Phillips screws to install the bottom shell in a suitable position, then use 4pcs M3\*12 hexagon socket screws to fix the panel on the bottom shell.

