



NAS-8523D

IP POE Intercom Panel

SPON IP POE Wall Mount Intercom Station NAS-8523D with a separate microphone and speaker, allowing full duplex conversations with Master Stations. It is equipped with two assignable call button which used for any indoor environment .



MAIN FEATURES

1. Durability and Communication

- Robust 6mm aluminum panel with anti-stab protection and vandalism-resistant screws.
- Built-in 3W speaker and microphone for hands-free calling.
- Line-output interface for connecting external speakers or earphones.

2. Connectivity and Access Control

- Relay I/O interface for system linkage or access control.
- Supports offline calling with pre-defined targets on its web UI.
- One-press calling feature with targets set via management software.
- Standard RJ45 interface with IEEE 802.3af support for flexible deployment.

3. Network Integration and Management

- Compatible with standard SIP protocol for integration with SIP PBX systems like Yeastar, Asterisk, and Cisco.
- Remote management and online upgrade capabilities.

SPECIFICATION

POWER PARAMETERS

Power Supply:	DC24V/1A、PoE IEEE802.3af
Standby Power Consumption:	≤3W

AUDIO & VIDEO PARAMETERS

S/N (Signal-to-Noise) Ratio:	Broadcast-Speaker:81dB Broadcast-Line:88dB Line in-Record out:82dB
Audio Sampling & Bit Rate:	22.05KHz 16bit 8kbps-320kbps
Built-in Speaker(Power output):	3W
Built-in Speaker(Impedance):	8ohm
Built-in Mic:	Electret Microphone
Built-in Mic(Sensitivity):	-45±3dB
Built-in Mic(Directivity):	Omnidirectional
Harmonic Distortion:	<1%
Frequency Respinse:	40Hz~10KHz (WAV) 50Hz~20KHz (MP3)

NETWORK PARAMETERS

Network I/F:	10BASE-T/100BASE-TX RJ45
Network Protocol:	TCP/IP、UDP、ARP、ICMP、IGMP、SIP、HTTP、FTP
Configuartion Method:	Web Interface

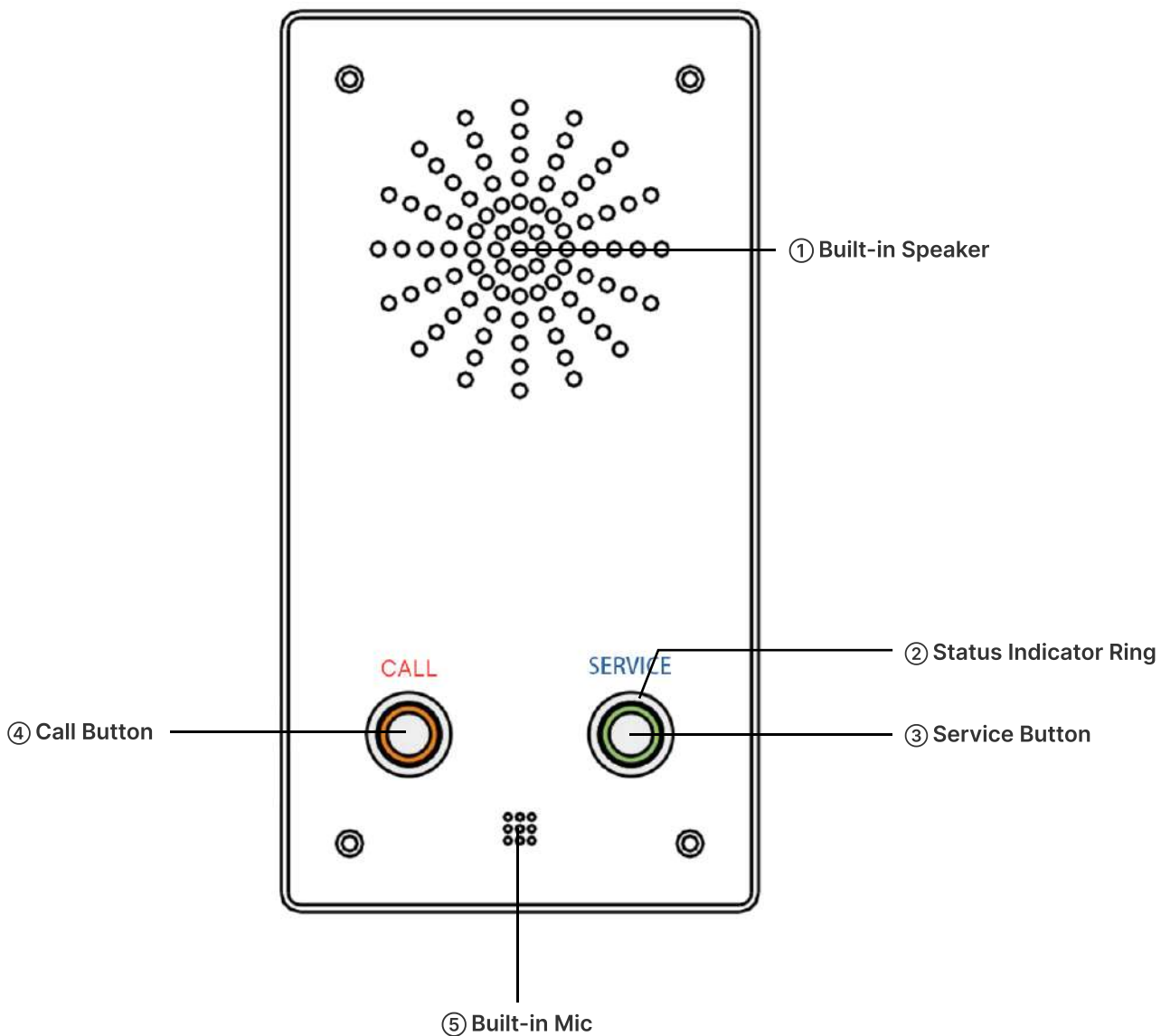
MECHANICAL&ENVIRONMENT PROPERTIES

Mounting Method:	Wall-mounted
Installation Environment:	Dry Indoor Locations
Operating Temperature:	-20°C~55°C (-4°F~131°F)
Operating Humidity:	≤90% RH non-condensing
Body Material:	Aluminium alloy
Color:	Silver
Back Shell Material:	Steel
Product Dimension:	101×191×46mm
Product Weight:	0.95 kg
Product Warranty:	2 Years

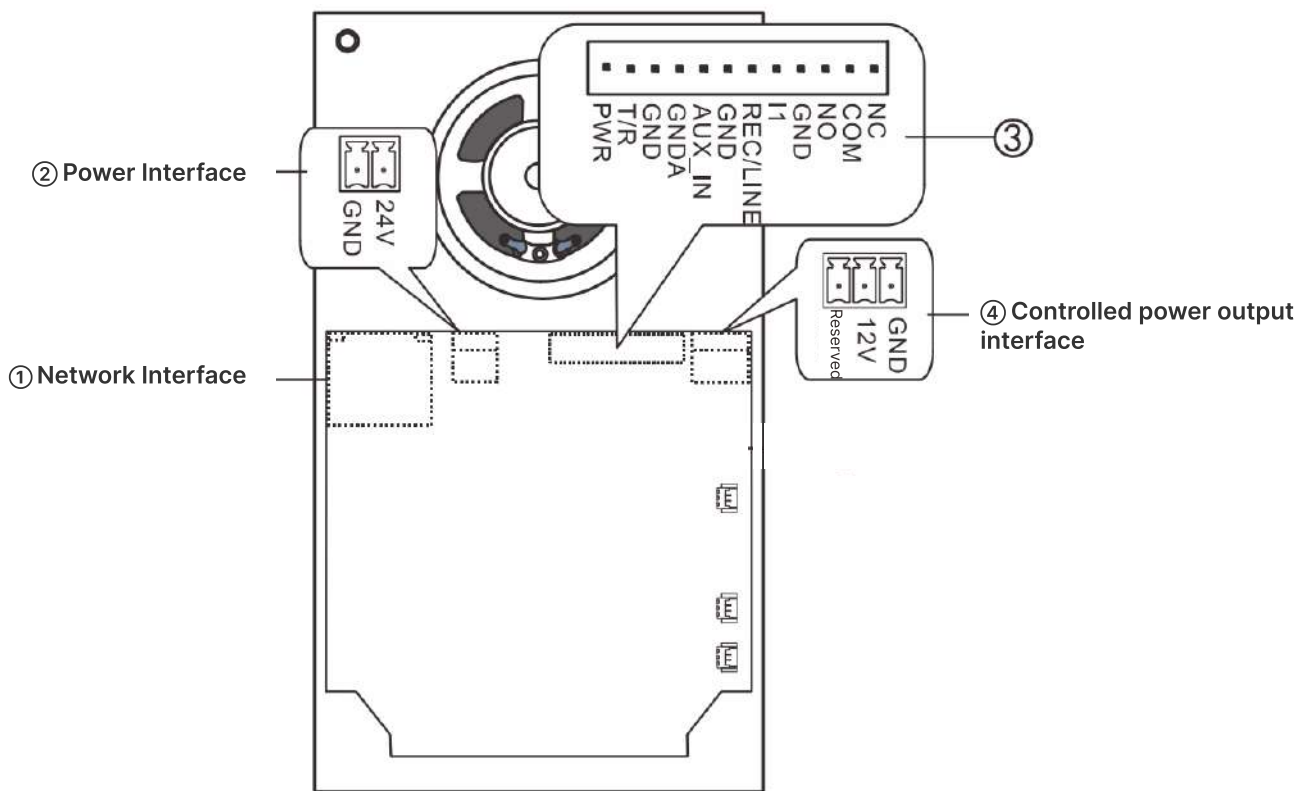
ACCESSORIES

1×Power Adaptor(24V/1A)
4×Allen Screw(M3*12)
1×Allen Wrench(2.5mm)
1×Wiring Terminal(3.5-2P)
1×Wiring Terminal(3.5-3P)
4×Half Round Head Philips Screw(ST4*25)
1×Red-Black Line(X2-80)
1×Red-White Line(X12-100)
1×Quality Certificate&Warranty Card
1×Quick Installation Guide

PORTS DESCRIPTION



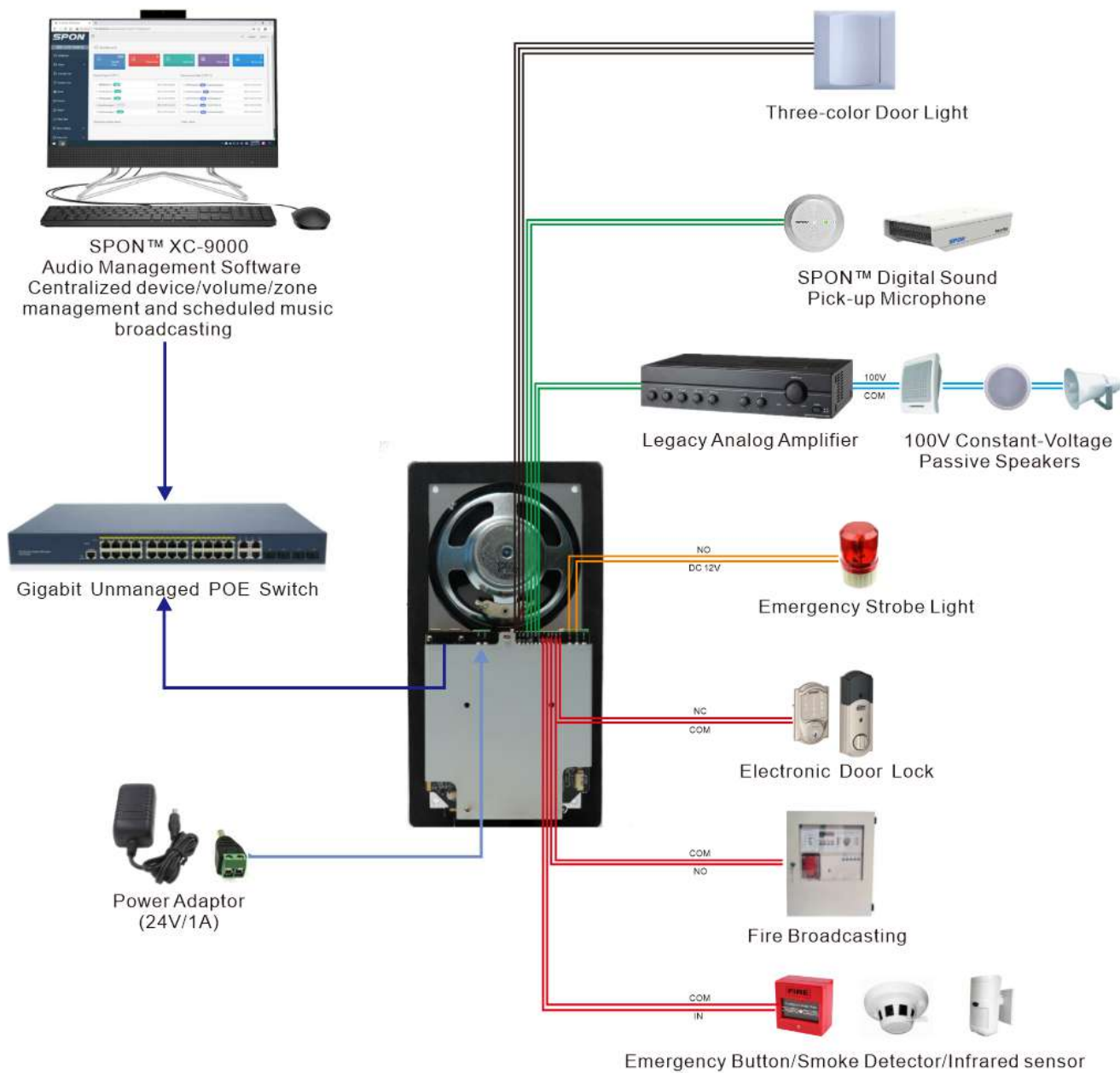
PORTS DESCRIPTION



③ Comprehensive Interface

▪	NC	┌──┐	Alarm output (NC:normally closed,COM:COM,NO:normally open)
▪	COM		
▪	NO		
▪	GND	┌──┐	Alarm input 1 (GND:Ground,L1:alarm input1)
▪	I1		
▪	REC/LINE	┌──┐	Record out/line out interface(REC/LINE:Signal,GND:ground)
▪	GND		
▪	AUX_IN	┌──┐	Line in interface(AUX_IN:Signal,GNDA:Analog ground)
▪	GNDA		
▪	GND	┌──┐	Three-color door light interface(GND:Ground,T/R:Signal,PWR:Power)
▪	T/R		
▪	PWR		

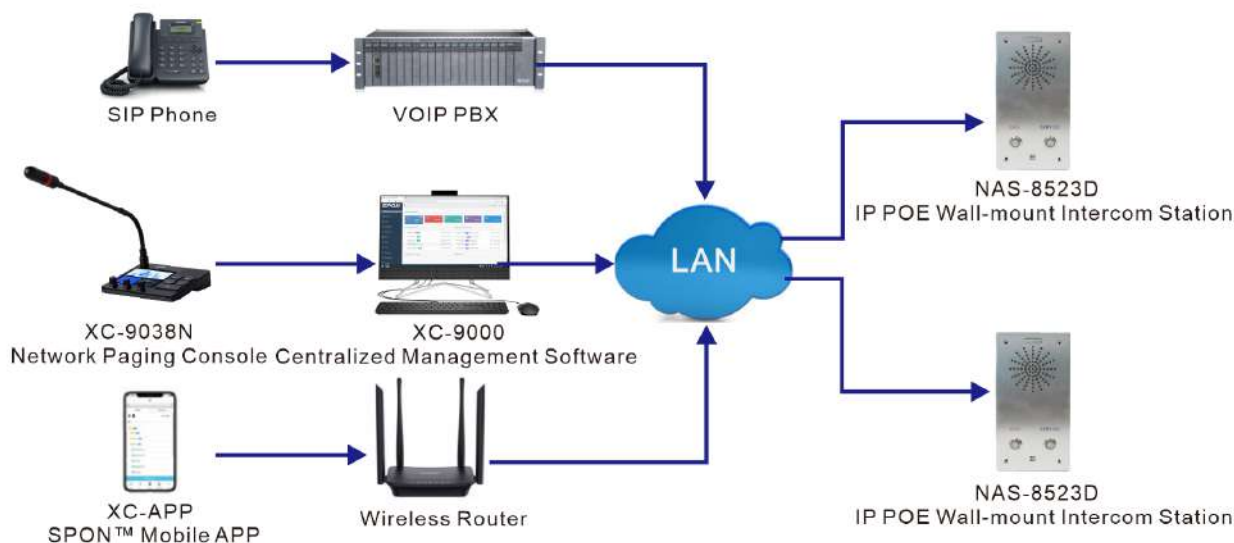
INTERFACE DESCRIPTION



APPLICATIONS

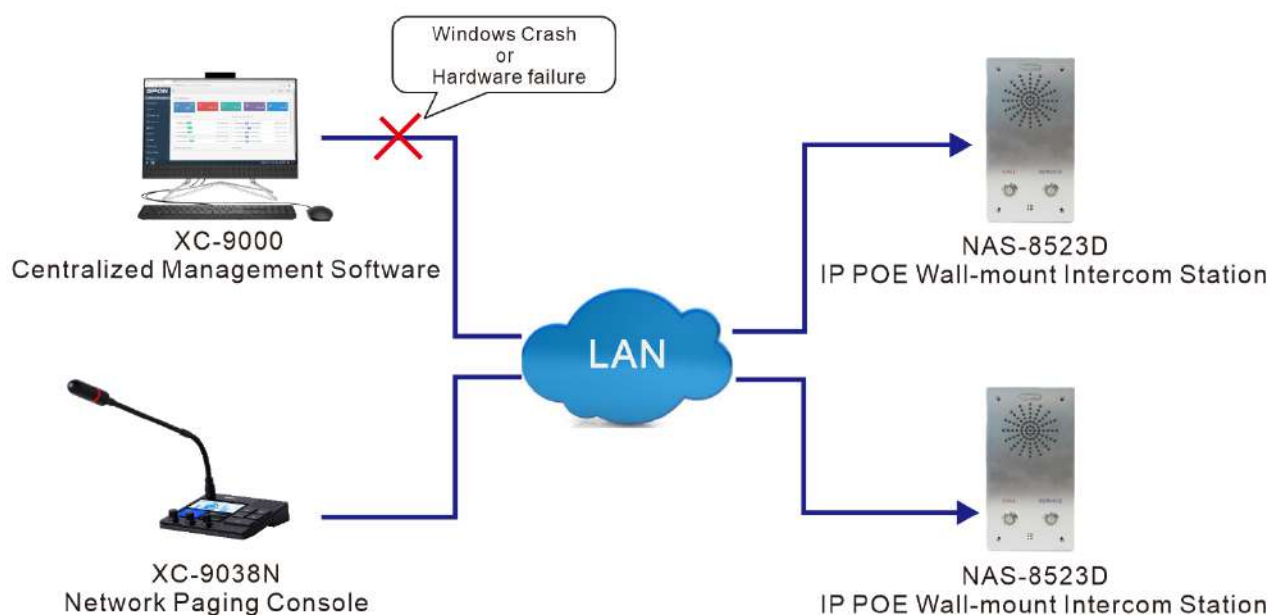
Application 1

The IP POE Wall-mount Intercom Station NAS-8523D support SIP protocol which can be independently used as a sip endpoint to integrated with mainstream VOIP system for receiving sip call from SIP phone or SIP softphone ; Meanwhile , it also can receive call from SPON IP paging microphone or mobile APP under the SPON management software.



Application 2

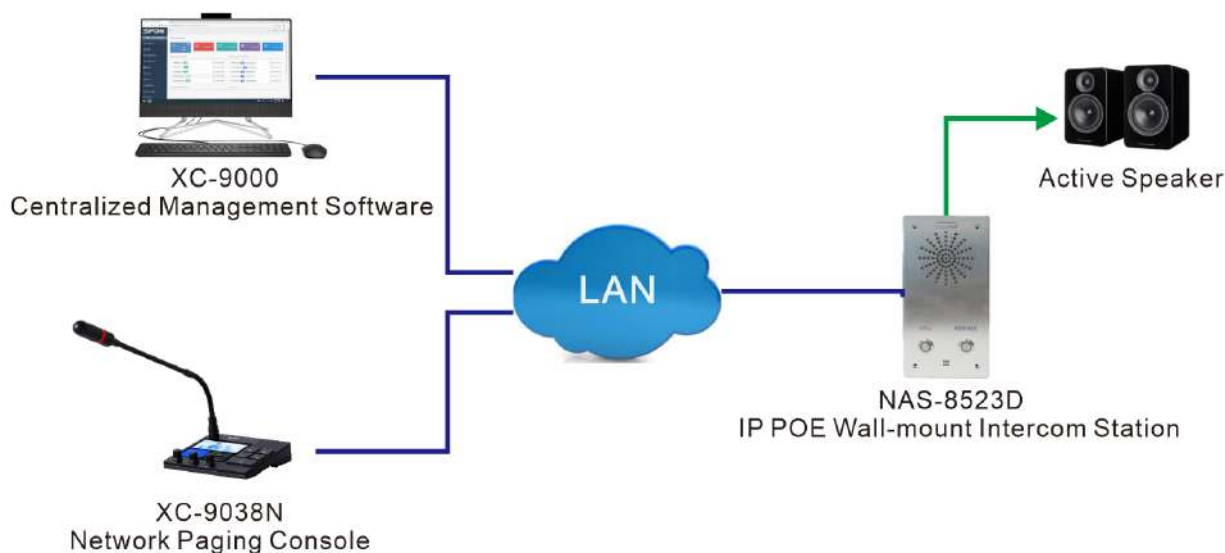
The IP POE Wall-mount Intercom Station NAS-8523D support offline intercom function , it can receive and initiate offline calling without centralized software , the offline call target can be set on its webpage.



APPLICATIONS

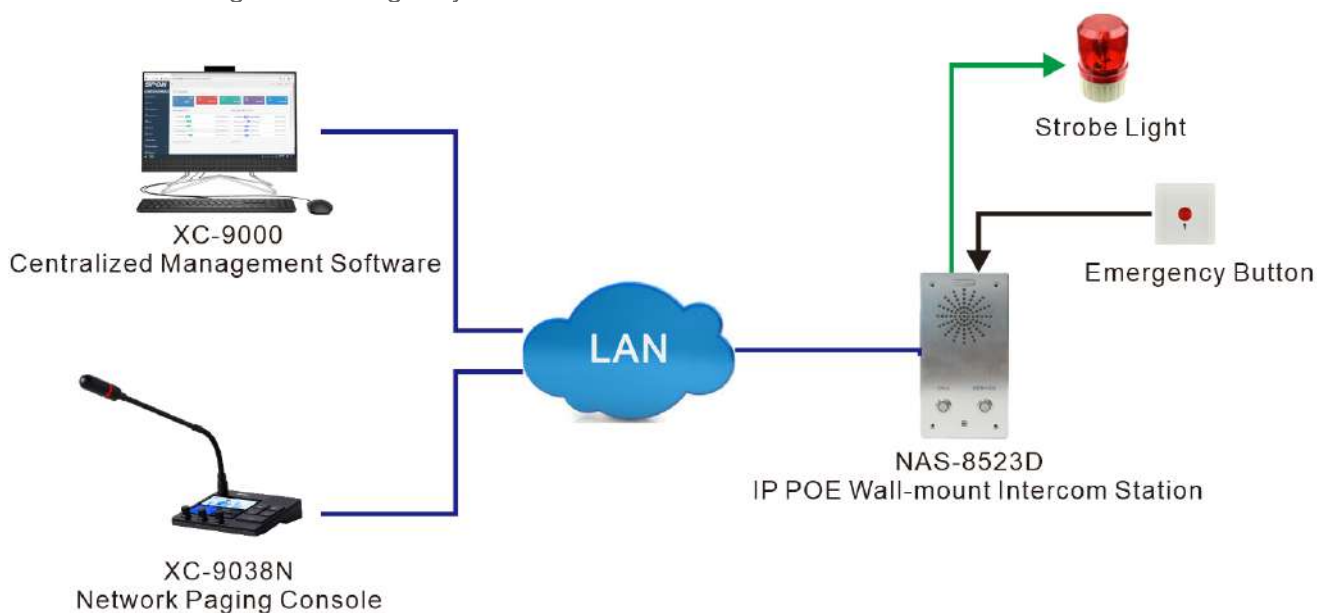
Application 3

The IP POE Wall-mount Intercom Station NAS-8523D with built-in speaker and line output interface which can receive broadcasting from IP paging mic or Centralized management software , user can choose the sound out from built-in speaker or external active speaker.



Application 4

The IP POE Wall-mount Intercom Station NAS-8523D with relay I/O interface which can be connect with emergency button or smoke detector 、strobe light or electronic door lock . During intercom call , the relay output can be triggered by the remote IP paging mic .User aslo can set the task of triggering the automatic call through the emergency button in the software.



INSTALLATION

Installation instructions

First use 4 plastic expansion sleeves and round head Phillips screws to install the bottom shell in a suitable position, then use 4pcs M3*12 hexagon socket screws to fix the panel on the bottom shell.

