



XC-9133AV

IP Visual Intercom



SPON IP Wall Mount Video Intercom Station XC-9135AV is designed to be the smart video intercom solution for outdoor use, the protection level can be reached to IPX5. It is allow user to see and speak to command center on the touch screen . Meanwhile , it supports to release the door remotely by command center .



MAIN FEATURES

1.High-Quality Display and Camera

- 7-inch high-definition capacitive touchscreen with 800×1280 resolution.
- Built-in 2 MP low illuminance, wide dynamic dual camera.



2.Advanced Communication and Connectivity

- Digital audio processor for full duplex communication with echo cancellation.
- Multiple call modes including double virtual buttons, virtual numerical dialpad, and call list.
- Offline calling capabilities without server dependency.
- Standard SIP protocol support for easy integration with mainstream SIP PBX systems (Yeastar, Asterisk, Cisco, etc.).



3.System Integration and Outdoor Suitability

- Relay I/O port for connecting to third-party external equipment.
- Remote management and online upgrading features.
- Designed for outdoor use with a protection level of IPX5.



SPECIFICATION

POWER PARAMETERS

Power Supply: DC12V ,1.5A

Standby Power Consumption: <4W

Overall Power Consumption: ≤6W

AUDIO & VIDEO PARAMETERS

Audio Codec: MP2, MP3, PCM, ADPCM

Audio Sampling & Bit Rate: 8kHz~44.1kHz, 16bit, 8kbps~320kbps

Built-in Speaker: 3W ,4Ω

S/N(Broadcast-Speaker): 84dB

THD (Total Harmonic Distortion): <1%

Camera: Dual Camera ,1080P

Video Transmission Bit Rate: 512Kbps-1Mbps

Video Codec: VGA

NETWORK PARAMETERS

Network I/F: 10BASE-T/100BASE-TX RJ45

Network Protocol: TCP/IP、UDP、ARP、ICMP、IGMP、SIP、HTTP.

Configuartion Method: Web Interface or DevConfig Tool.

MECHANICAL&ENVIRONMENT PROPERTIES

Display Screen: 7 inch(1280*800); capacitive touch screen;

Mounting Method: Wall-mounted

Installation Environment: Dry Indoor Locations Only

Operatiing Temperature: 0°C~+45°C (32°F~113°F)

Operating Humidity: ≤90% RH non-condensing

Front Panel Material: Aluminum Alloy

Housing Material: Surface-Treated Steel Plate

Color: Silver

Product Dimensions: 140×283×29mm

Product Weight: 1.0KG

Protection Level: IPX5

Product Warranty: 2 Years Limited

ACCESSORIES

2×Terminal(3.81-2P)

4×Inner Hexagon Screw(M3*12)

1×Inner Hexagon L-form Wrench

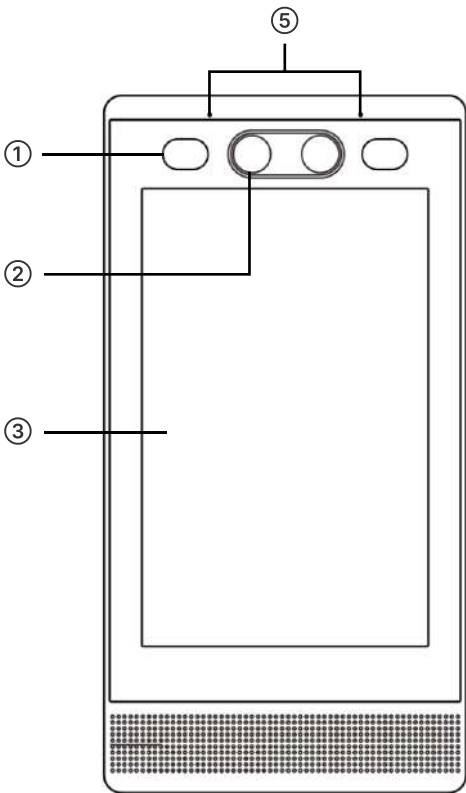
1×Terminal(3.81-3P)

1×Connection Cable(X2120)

1×Quick Installation Guide

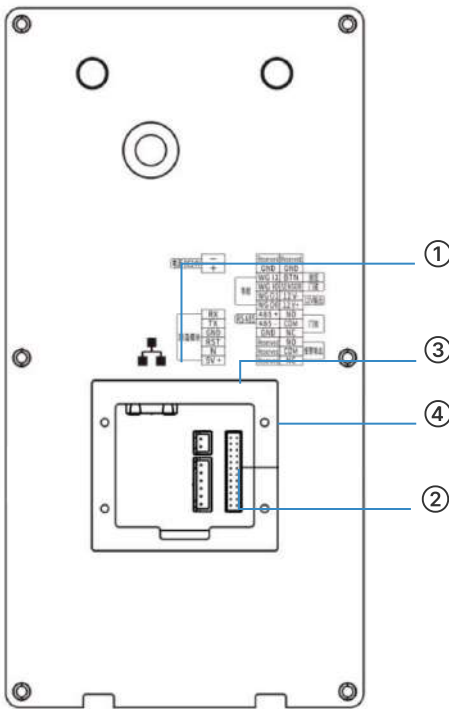
1×Power Adaptor(DC12V/1.5A)

PORTS DESCRIPTION



Front Panel

- ① Fill Light : Reserved
- ② Dual Camera
- ③ capacitive touch screen
- ④ Built-in Speaker
- ⑤ Built-in MIC

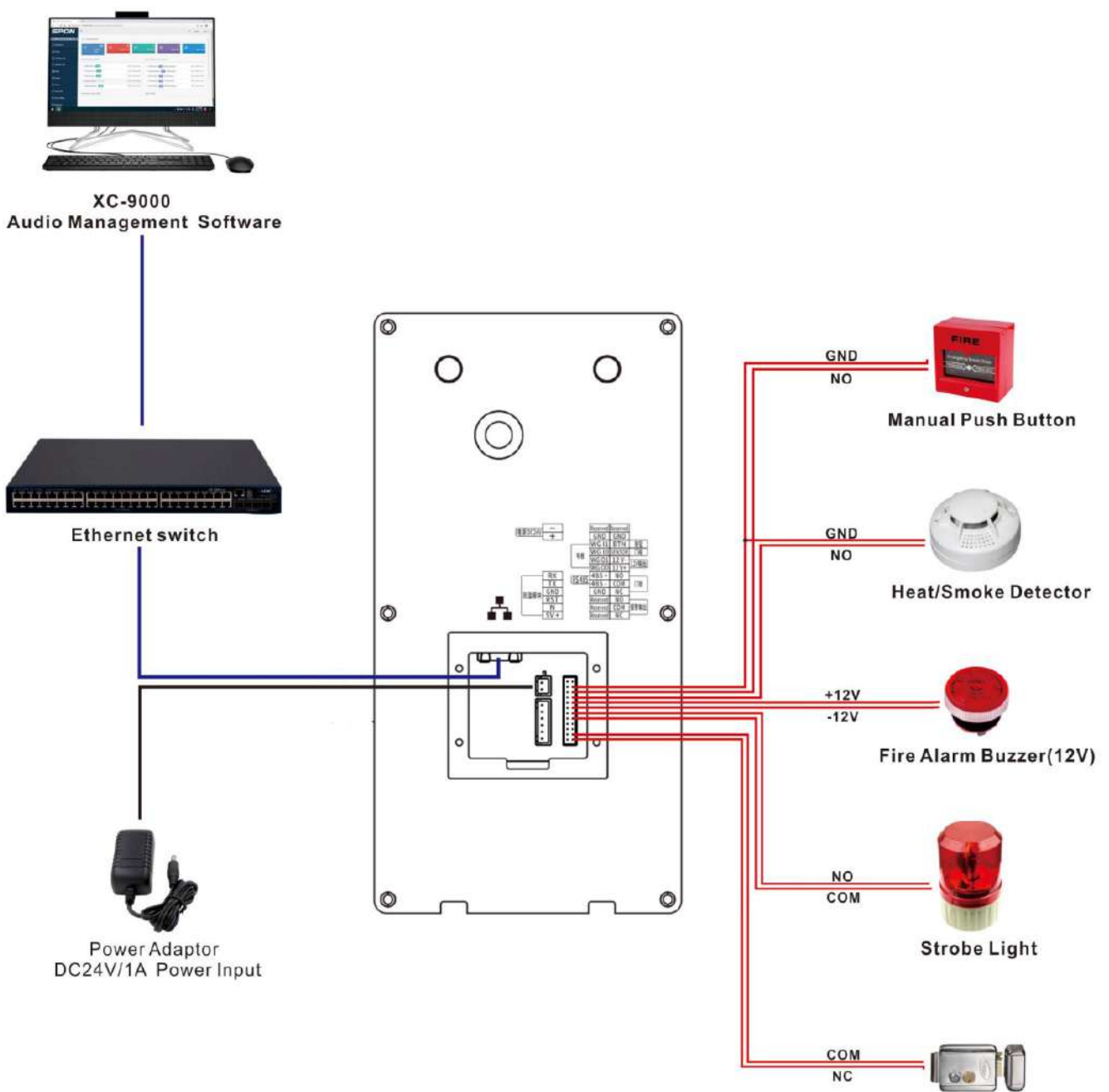


Rear Panel

- ① Network Port: Connect to Ethernetswitch
- ② Temperature Measuring Module Interface: Reserved
- ③ Power Supply Port
- ④ Integrated communication interface:

Function	Number	Interface diagram	Number	Function
Reserved	1		13	Reserved
Reserved	2		14	Relay Input GND
Reserved	3		15	Relay Input 1
	4		16	Relay Input 2
	5		17	Relay Output GND
	6		18	Relay Output 1(12V output)
Reserved	7		19	Relay Output 2 NO
	8		20	Relay Output 2 GND
Reserved	9		21	Relay Output 2 NC
Reserved	10		22	Relay Output 3 NO
Reserved	11		23	Relay Output 3 GND
Reserved	12		24	Relay Output 3 NO

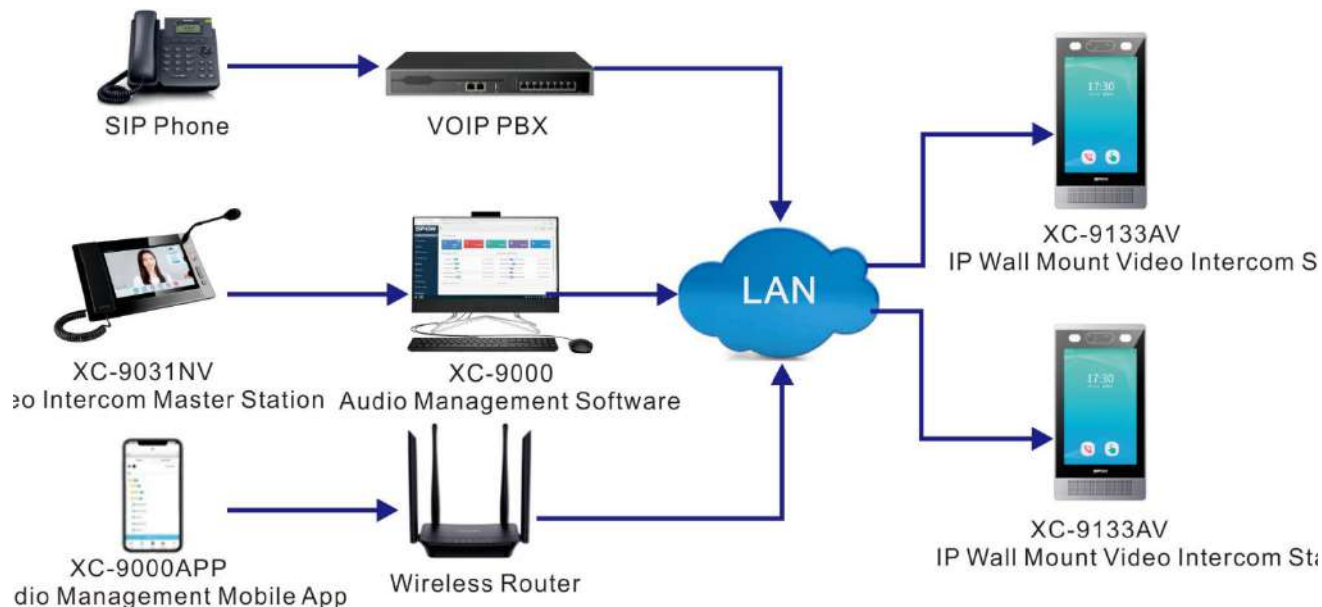
CONNECTION DIAGRAM



APPLICATIONS

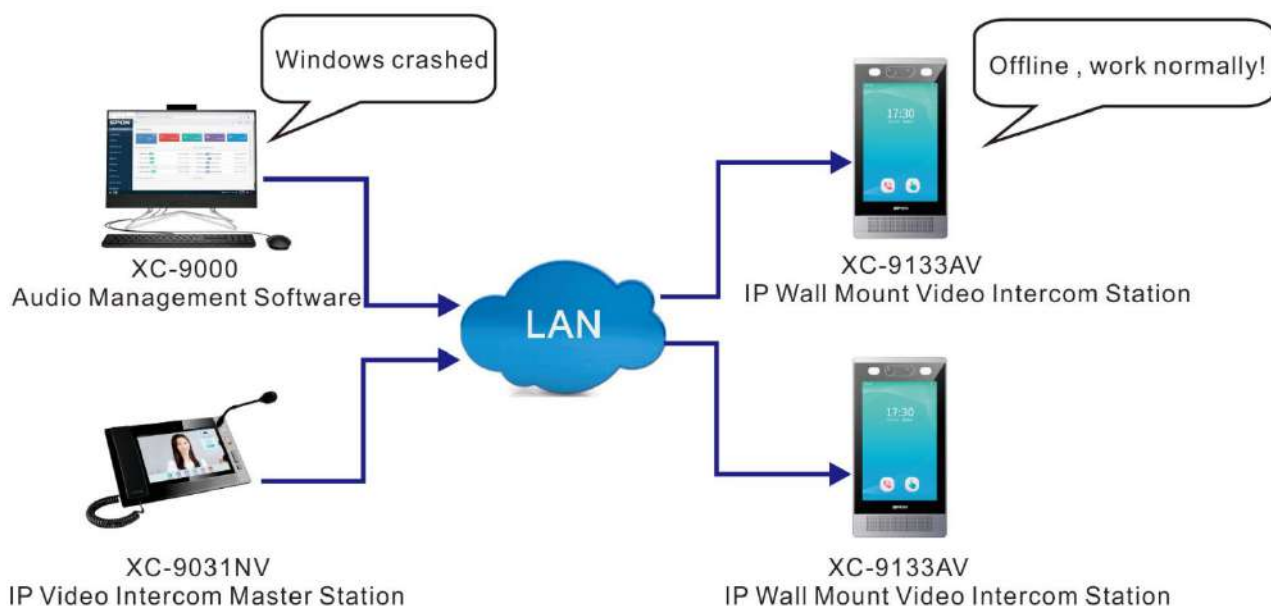
Application 1

The IP Wall Mount Video Intercom Station XC-9135AV can receive video & audio intercom initiated by the 3-rd party VOIP telephone、SPON IP paging microhone/APP(Windows、Android/IOS),etc. Built-in mic for full duplex communication.



Application 2

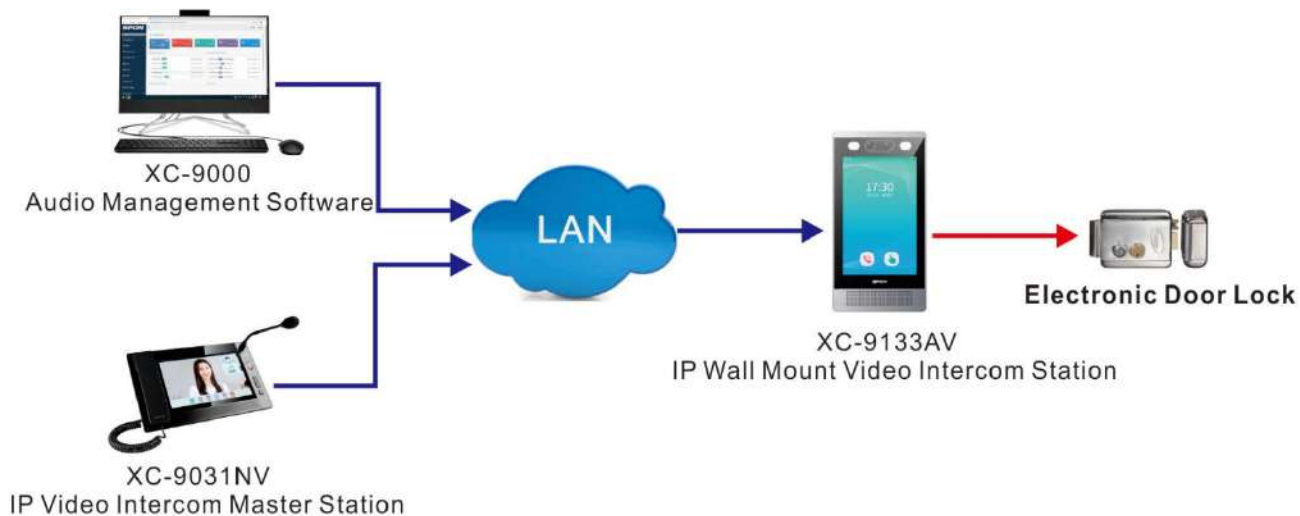
The IP Wall Mount Video Intercom Station XC-9135AV support offline intercom , the offline call target need to pre-set on its webpage, when the windows crashed , the system can normally work .



APPLICATIONS

Application 3

The IP Wall Mount Video Intercom Station XC-9135AV equipped with Relay output interface which can be connect to electronic door lock . During intercom with IP Video Paging Console XC-9031NV , the electronic door lock can be released remotely by IP Video Paging Console XC-9031NV.



DIMENSION DRAWING

- (1) Please make holes of appropriate size on the wall according to the mounting size of the bottom shell;
- (2) the waterproof tail line through the hole of the waterproof tail line of the dark bottom shell, and then the bottom shell embedded in the hole;
- (3) Fasten the terminal and fix the terminal with the mounting bottom shell using 4 M3*12 countersunk head inner hexagon screws.

