



## XC-9135AVE

### Network Outdoor Visual Intercom

SPON IP PoE Outdoor Video Intercom Station XC-9135AVE is designed to be the smart video intercom solution for outdoor use, the protection level can be reached to IPX5. It allows user to make two-way video intercom to command center on the touch screen. Meanwhile, it supports to release the door remotely by command center.



## MAIN FEATURES

### 1. High-Quality Display and Camera

- 7-inch high-definition capacitive touchscreen with 800×1280 resolution.
- Built-in 2 MP low illuminance, wide dynamic dual camera.



### 2. Advanced Communication and Connectivity

- Digital audio processor for full duplex communication with echo cancellation.
- Multiple call modes including double virtual buttons, virtual numerical dialpad, and call list.
- Offline calling capabilities without server dependency.
- Standard SIP protocol support for easy integration with mainstream SIP PBX systems (Yeastar, Asterisk, Cisco, etc.).

### 3. System Integration and Outdoor Suitability

- Relay I/O port for connecting to third-party external equipment.
- Remote management and online upgrading features.
- Designed for outdoor use with a protection level of IP65.

# SPECIFICATION

## POWER PARAMETERS

Power Supply: DC24V ,1A

Standby Power Consumption: <4W

Overall Power Consumption: ≤6W

## AUDIO & VIDEO PARAMETERS

Audio Codec: MP2, MP3, PCM, ADPCM

Audio Sampling & Bit Rate: 8kHz~44.1kHz, 16bit, 8kbps~320kbps

Built-in Speaker: 3W ,4Ω

S/N(Broadcast-Speaker): 84dB

THD (Total Harmonic Distortion): <1%

Camera: Dual Camera ,1080P

Video Transmission Bit Rate: 512Kbps-1Mbps

## NETWORK PARAMETERS

Network I/F: 10BASE-T/100BASE-TX RJ45

Network Protocol: TCP/IP、UDP、ARP、ICMP、IGMP、SIP、HTTP.

Configuration Method: Web Interface or DevConfig Tool.

## MECHANICAL&ENVIRONMENT PROPERTIES

Display Screen: 7 inch(1280\*800); capacitive touch screen;

Mounting Method: Flush Mount

Installation Environment: Dry Indoor Locations Only

Operating Temperature: 0°C~+45°C (32°F~113°F)

Operating Humidity: ≤90% RH non-condensing

Front Panel Material: Aluminum Alloy

Housing Material: Surface-Treated Steel Plate

Color: Silver

Product Dimensions: 140×283×29mm

Product Weight: 1.0KG

Protection Level: IP65

Product Warranty: 2 Years Limited

## ACCESSORIES

2×Terminal(3.81-2P)

4×Inner Hexagon Screw(M3\*8,304)

1×Inner Hexagon L-form Wrench

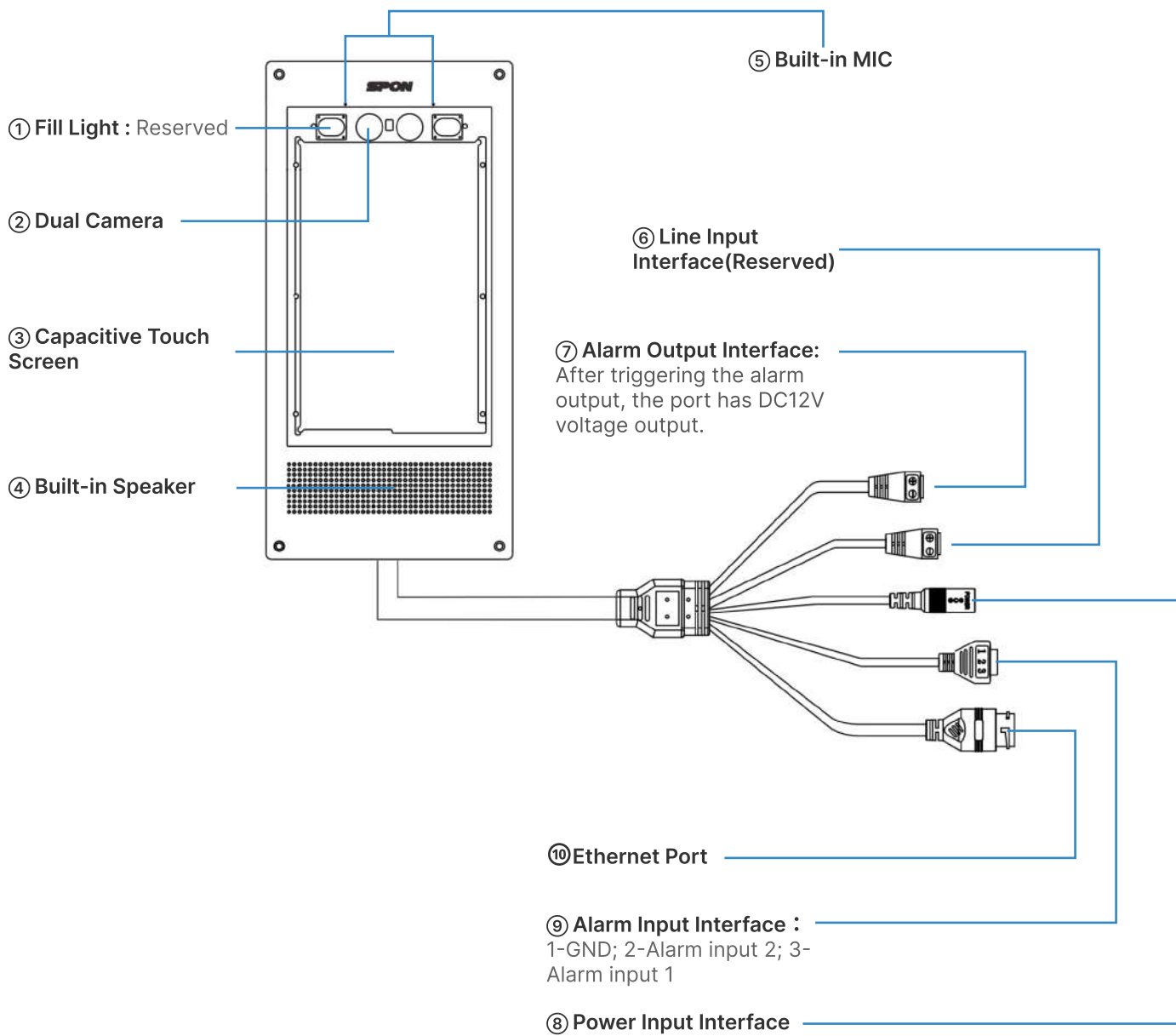
1×Terminal(3.81-3P)

1×Waterproof Connector

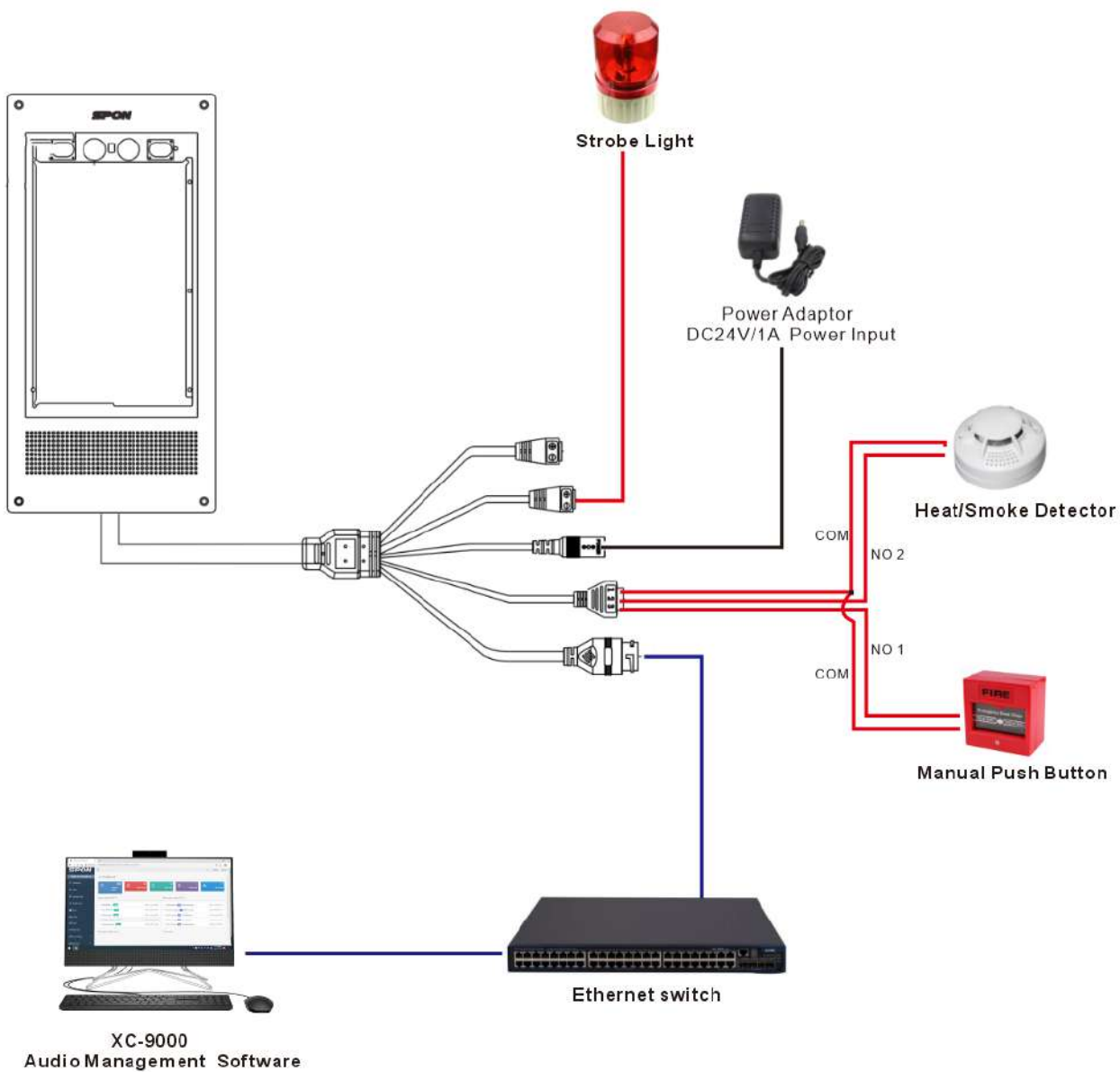
1×Quick Installation Guide

1×Power Adaptor(DC24V/1A)

# PORTS DESCRIPTION



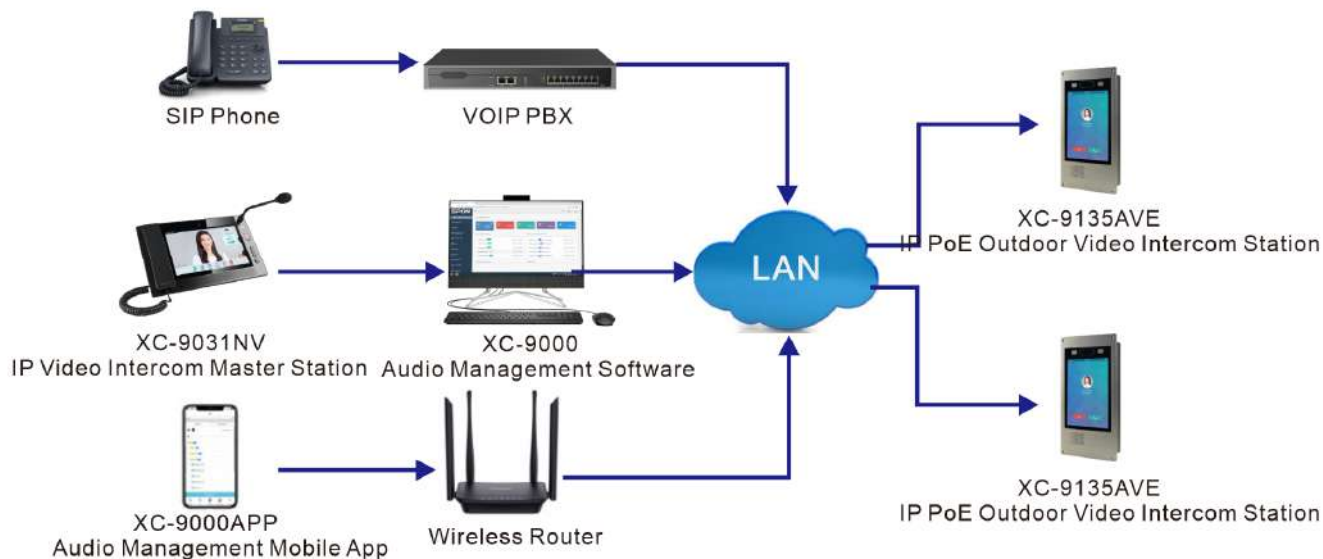
# CONNECTION DIAGRAM



# APPLICATIONS

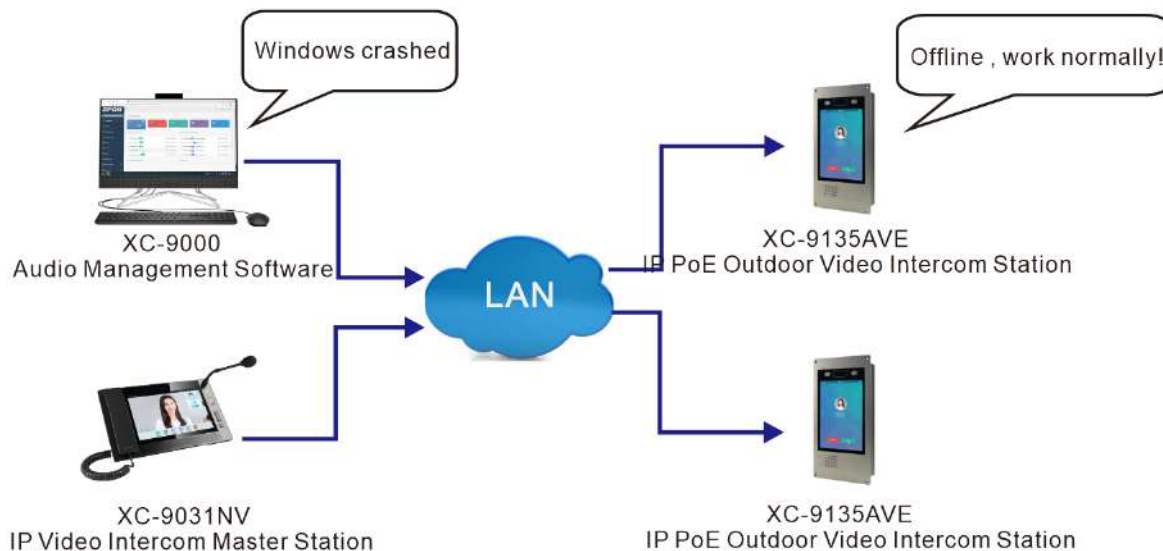
## Application 1

SPON IP PoE Outdoor Video Intercom Station XC-9135AVE can receive video & audio intercom initiated by the 3-rd party VOIP telephone、SPON IP paging microphone/APP(Windows、Android/IOS),etc. Built-in mic for full duplex communication.



## Application 2

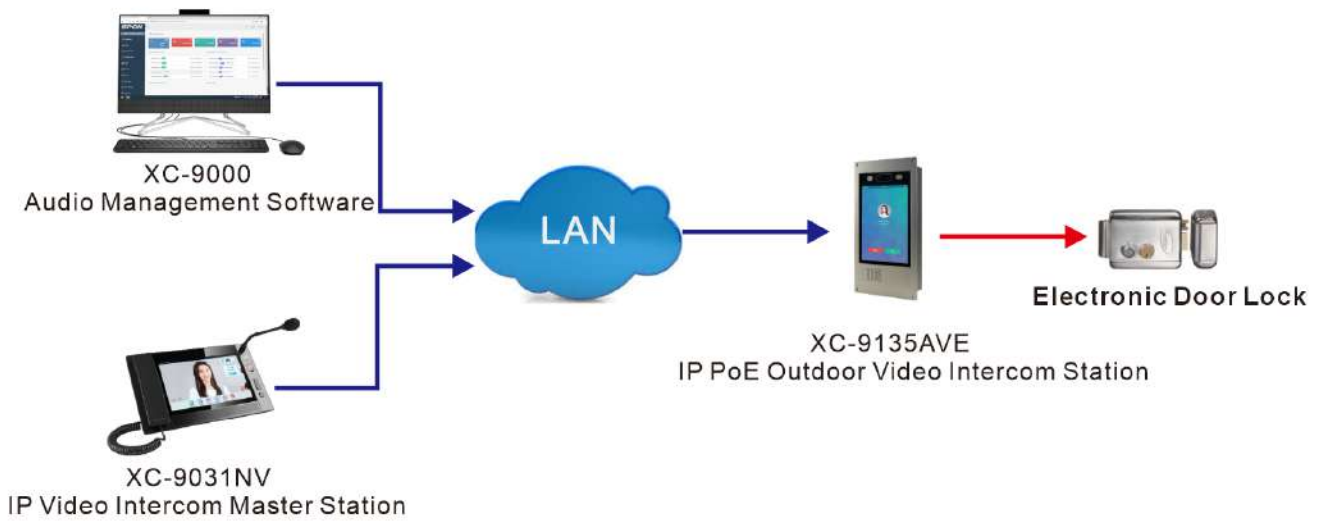
SPON IP PoE Outdoor Video Intercom Station XC-9135AVE support offline intercom , the offline call target need to pre-set on its webpage, when the windows crashed , the system can normally work



# APPLICATIONS

## Application 3

SPON IP PoE Outdoor Video Intercom Station XC-9135AVE equipped with Relay output interface which can be connect to electronic door lock . During intercom with IP Video Paging Console XC-9031NV , the electronic door lock can be released remotely by IP Video Paging Console XC-9031NV.



# DIMENSION DRAWING

- (1) Please make holes of appropriate size on the wall according to the mounting size of the bottom shell;
- (2) the waterproof tail line through the hole of the waterproof tail line of the dark bottom shell, and then the bottom shell embedded in the hole;
- (3) Fasten the terminal and fix the terminal with the mounting bottom shell using 4 M3\*12 countersunk head inner hexagon screws.

