



XC-9241V

Network Outdoor Emergency Call Box

SPON IP Outdoor Emergency Call Box XC-9241V is designed for outdoor environment use, stable and durable. This station is typically used as a communication, or emergency point and connects directly to the IP network making it easy to deploy anywhere and at any distance.

SIP

IPX6

HD 1080P

ONVIF

MAIN FEATURES

Durability & Communication

- Robust, waterproof metal shell with one-touch call for intercom and hands-free communication.
- HD camera with infrared lighting for video intercom.



Audio & Compatibility

- Built-in speakers and digital amplifier for external connections.
- Supports SIP and ONVIF protocols for VOIP systems and NVR integration.

Connectivity & Emergency Features

- Alarm inputs and DC12V output for emergency response.
- RJ45 interface for versatile network compatibility.

SPECIFICATION

Power Parameters

Power Supply: DC 24V/2.7A

Power Consumption: ≤60W

Audio & Video Parameters

Audio Codec: WAV, PCM, ADPCM

Audio Sampling & Bit Rate: 8kHz~44.1kHz, 16bit, 8kbps~320kbps

Built-in Speaker: 10W ,8Ω

S/N(Broadcast-Speaker): >80dB

Built-in Mic Sensitivity: -45±3dB

Built-in Camera: 1/3" CMOS

Built-in Camera Aperture and Focal Length: F2.0 ,2.3mm

Video Coding: VGA/720P/1080P

Video Transmission Bit Rate: 512Kbps-4Mbps

Network Parameters

Network I/F: 10BASE-T/100BASE-TX RJ45

Network Protocol: TCP/IP、UDP、ARP、ICMP、IGMP、SIP、HTTP

Configuration Method: Web Interface or DevConfig Tool.

Mechanical & Environment Properties

Mounting Method: Surface-mounted

Installation Environment: Outdoor Locations

Operating Temperature: -20°C~+70°C

Operating Humidity: ≤90% RH non-condensing

Shell Material: Steel

Color: Orange

Product Dimensions: 261×120×417mm

Protection Level: IP66

Product Warranty: 2 Years Limited

Accessories

1×Waterproof Connector

3×Plastic expansion sleeve(M8*40)

2×Terminal(3.81-4P)

4×Terminal(3.81-3P)

4×Hexagon socket screw(M8*18)

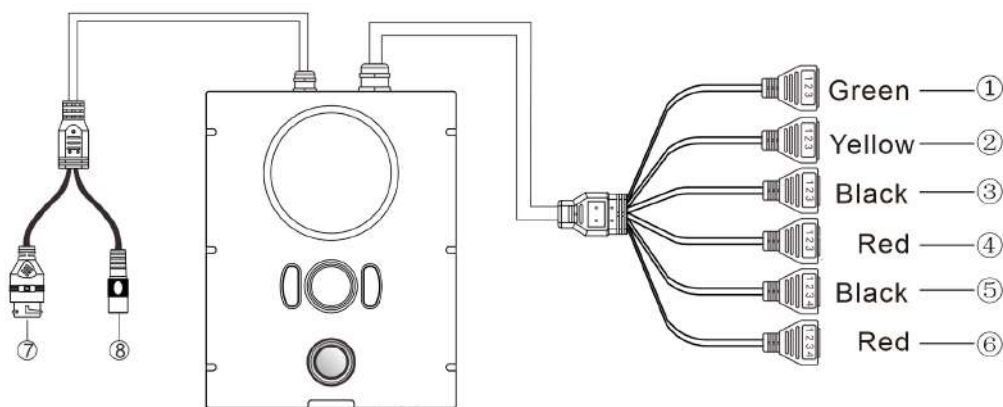
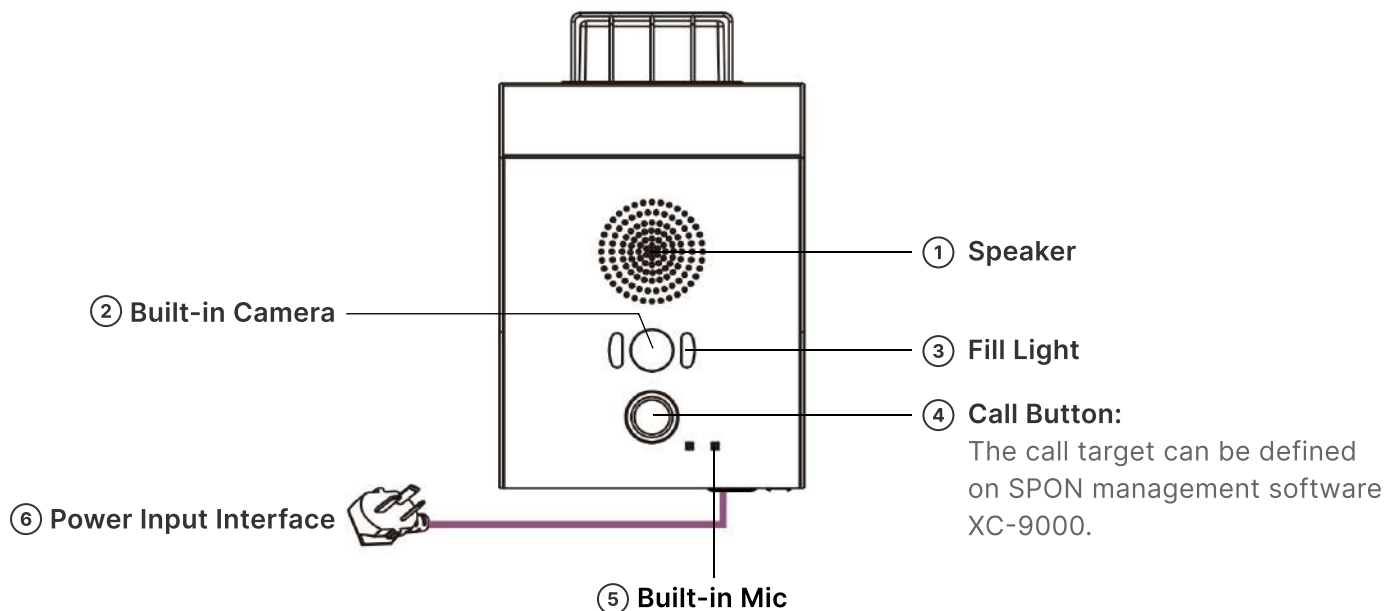
1×Power Adaptor(DC24V/2.7A)

3×Half Round Head Phillips Screw(M6*40)

1×Quick Installation Guide

1×Certificate and Warranty Card

PORTS DESCRIPTION



① **Relay Output:**

1-NO , 2-NC , 3-COM

② **Relay Input:**

1-GND , 2-Relay In 1 , 3-Relay In 2

③ **Communication Port:**

1-GND , 2-T/R , 3-GND

④ **Line Input & Output :**

1-Line In , 2-GND , 3-Line Out

⑤ **Controlled Power Output:**

1-Light 4 , 2-Light 3 , 3-Light 2 , 4-Light 1

⑥ **Power Amplifier Output:**

1-Right Channel + , 2-Right Channel - , 3-Left Channel + ,
4-Left Channel -

Note:

- 1.External power amplifier support 1*40W/ 4 ω or 2*20W/ 8 ω horn;
- 2.Loudspeaker polarity and channel output polarity connection must be corresponding;

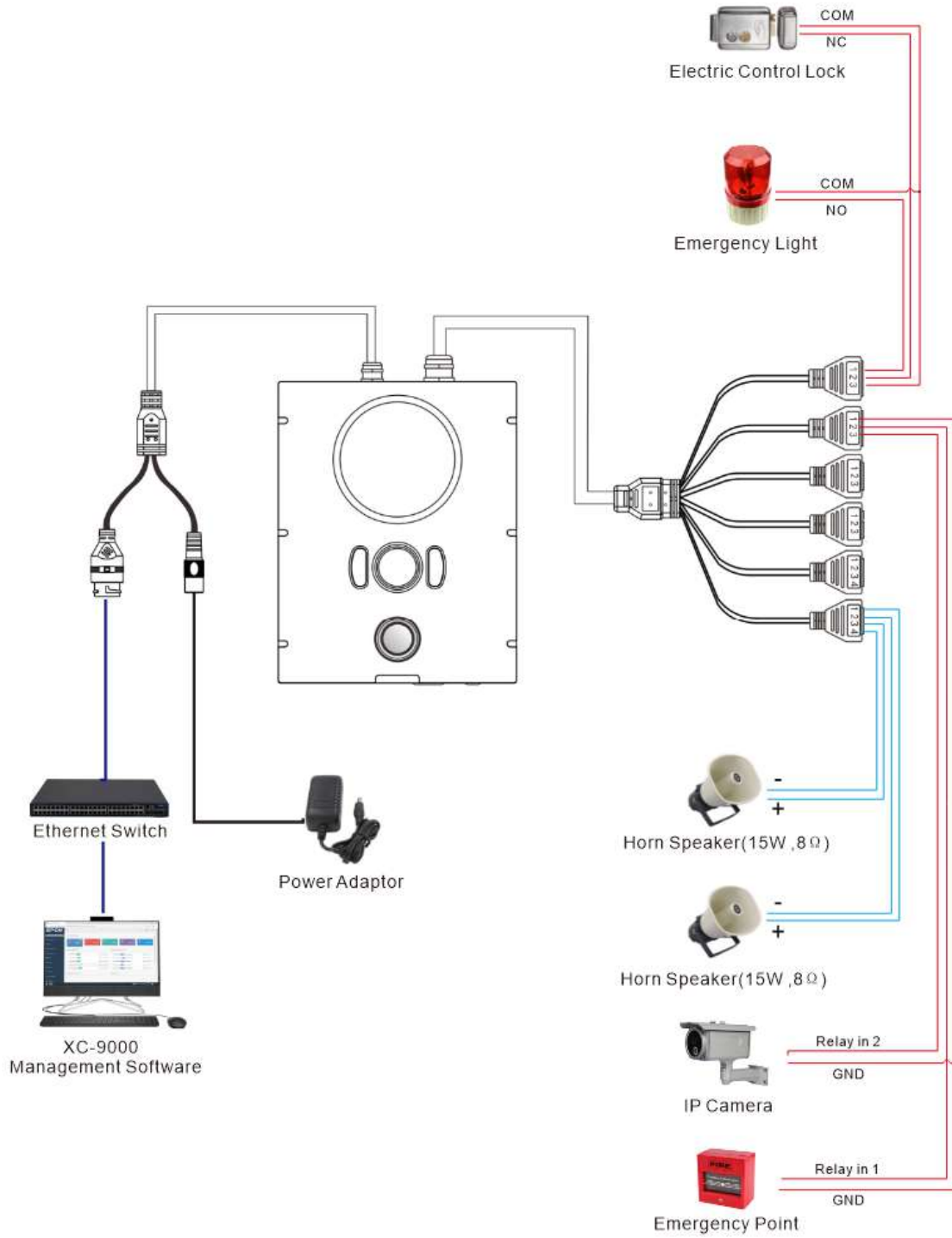
⑦ **Ethernet Port:**

To Ethernet Switch

⑧ **Power Input:**

DC24V , 2.7A

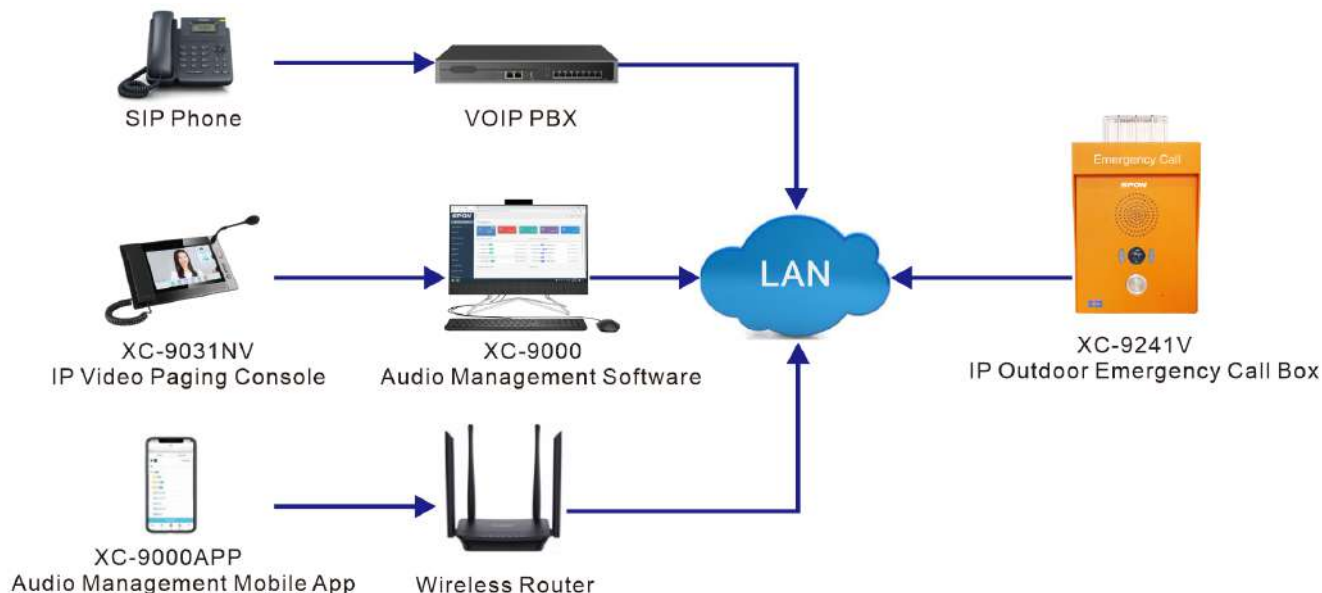
CONNECTION DIAGRAM



APPLICATION

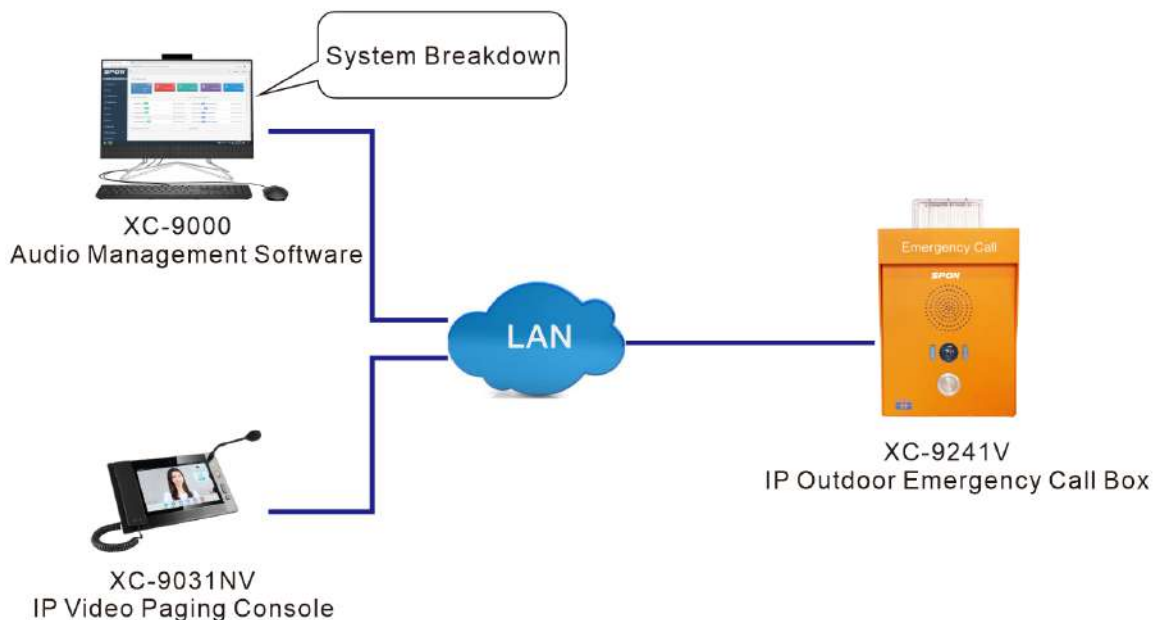
Application 1

IP Outdoor Emergency Call Box XC-9241V Support initiate&receive sip calling with the third-party SIP PBX via SIP trunk .In addition, as a SIP endpoint, it can be independently registered to SiP PBX to call with SIP phone or SIP softphone.



Application 2

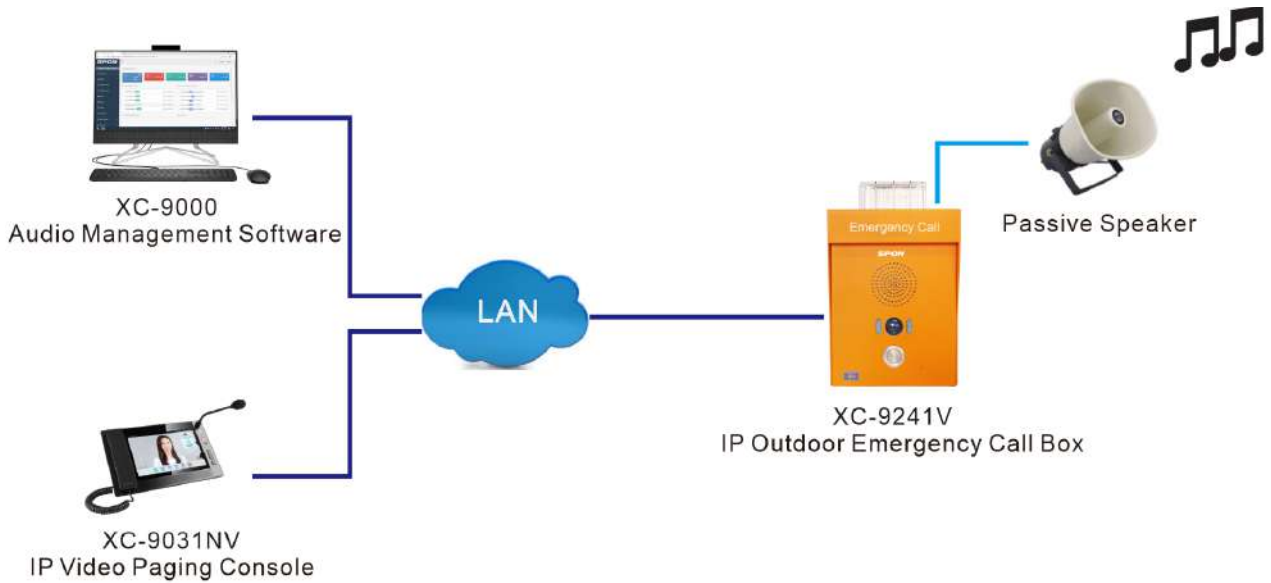
IP Outdoor Emergency Call Box XC-9241V support initiating and receiving offline calling to designated endpoints or IP paging mic , the offline call target can be set on its webpage.



APPLICATION

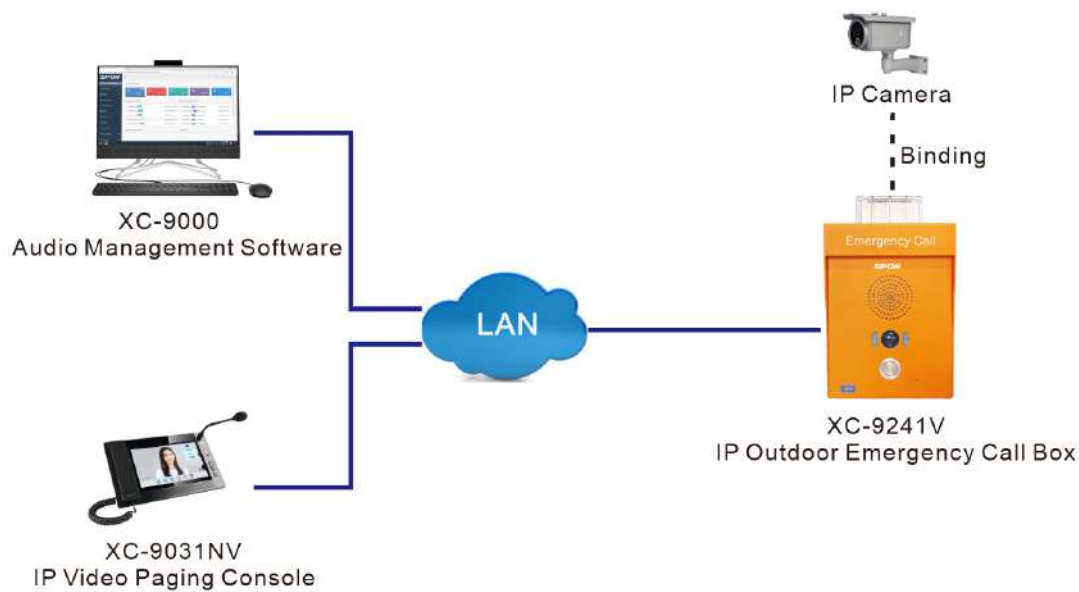
Application 3

IP Outdoor Emergency Call Box XC-9241V has a built-in amplifier which can drive external passive speaker , when broadcasting from software or IP paging mic , the output sound of XC-9241V can be defined to output from external passive speaker.

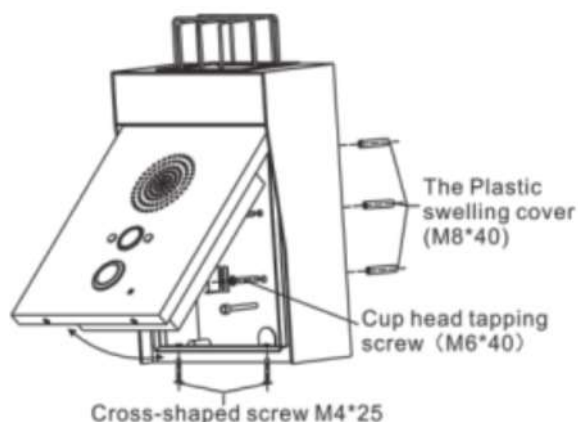
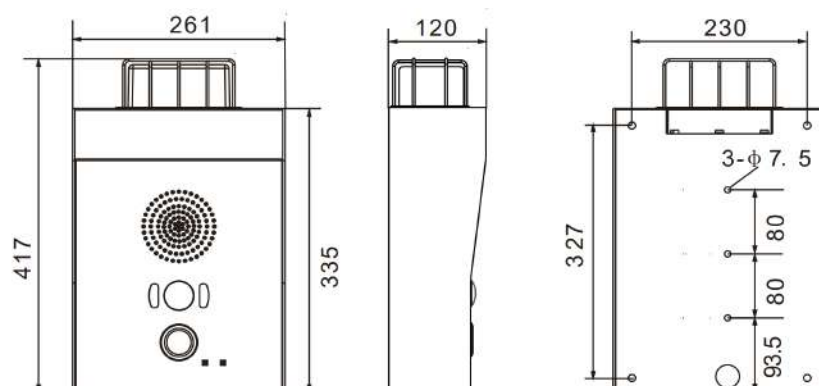


Application 4

IP Outdoor Emergency Call Box XC-9241V can binding with 3rd party IP camera on management software XC-9000. During Intercom with IP paging mic ,you can switch between XC-9241V and IP camera video display on paging microphone.



DIMENSION&INSTALLATION



Wall installation

Step 1: Drilling 3 holes on the wall according the place of 3 Plastic swelling covers as the picture show

Step 2: Using 3 cup head tapping screw(M6*40) to fix the ground shell on the wall.

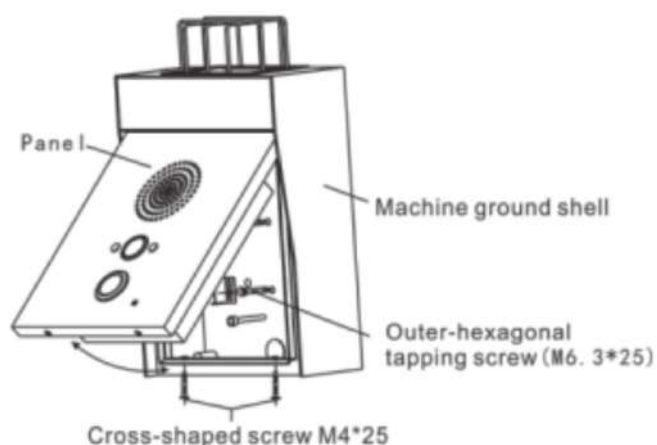
Step 3: Connecting the wire and then close the panel lock, using 2 cross-shaped screw M4*25 to align with the 2 screw holes on the button and tighten it.

Pole installation

Step 1: Drilling a $\phi 5$ hole on the metal pole, using external six-angle 304 stainless steel drilling tail tapping screw install the ground shell on the pole.

Step 2: Using diameter7.5mm hole to drill another two $\phi 5$ holes on the pole and install external six-angle 304 screw stainless steel drill tapping screw (M6.3*25)(Notes: the 3 external six-angle 304 screws all should be installed at the same time)

Step 3: Connecting the wires of the machine, close the back panel lock, aligning on the two screws with cross M4*25 of the machine ground and tightening it.



CASE



SPON SPON Communications Co., LTD

Address: No.70, Nantang Road, High-Tech Zone, Changsha, China.

Mobile: +86 138 7314 3517

Email: inquiry@sponcomm.com **Tel:** +86 731 8557 0190



www.sponcomm.com