

XC-9603A03/06/12

IP Outdoor Column Speaker

—

SPON IP Outdoor Column Loudspeaker XC-9603A03/06/12 is a versatile loud speaker. With an IPX5 rating, it can be used externally for applications such as public address, music streaming, pre-recorded message broadcast and scheduled announcements. It is mainly suitable for Park、Playground、 outdoor plaza.etc outdoor environment .

SIP

MAIN FEATURES

Integrated Design and Functionality

- Durable, all-metal shell with IPX5 waterproof rating and resistance to violence.
- One-touch call function for full-duplex intercom, pre-set via server.
- Built-in 10W speakerAll-in-one design combining network audio decoding, digital amplifier, and loudspeaker unit.Built-in high-capacity flash and clock chip for offline broadcasting.Built-in loop detection function for remote monitoring and easy maintenance of speakers.r and microphone for hands-free calling and broadcasting.



Audio Control and Network Integration:

Ambient noise detection during idle periods, with automatic adjustment of broadcast volume based on noise levels.Remote volume adjustment via server software.Standard RJ45 network interface for access anywhere with Ethernet, supporting cross-network segment and routing.Standard SIP protocol support for seamless integration with mainstream SIP PBX systems (Yeastar, Asterisk, Cisco, etc.).

Configuration and Upgrades:

Web interface for parameter configuration and remote firmware upgrades, enhancing functionality and user experience.

SPECIFICATION

POWER PARAMETERS

Power Supply:	AC220V/50Hz
Power Consumption:	≤40W(Power Output : 30W) ≤75W(Power Output : 60W) ≤150W(Power Output : 120W)

AUDIO PARAMETERS

Audio Codec:	MP2 , MP3, PCM, ADPCM
Audio Sampling & Bit Rate:	8kHz~44.1kHz, 16bit, 8kbps~320kbps
S/N:	≥80dB
Frequency Response:	200Hz-18KHz
Sensitivity:	90dB/M/W(XC-9603A03)、 93dB/M/W(XC-9603A06/12)

NETWORK PARAMETERS

Network I/F:	10BASE-T/100BASE-TX RJ45
Network Protocol:	TCP/IP、UDP、ARP、ICMP、 IGMP
Configuration Method:	Web Interface

MECHANICAL & ENVIRONMENT PROPERTIES

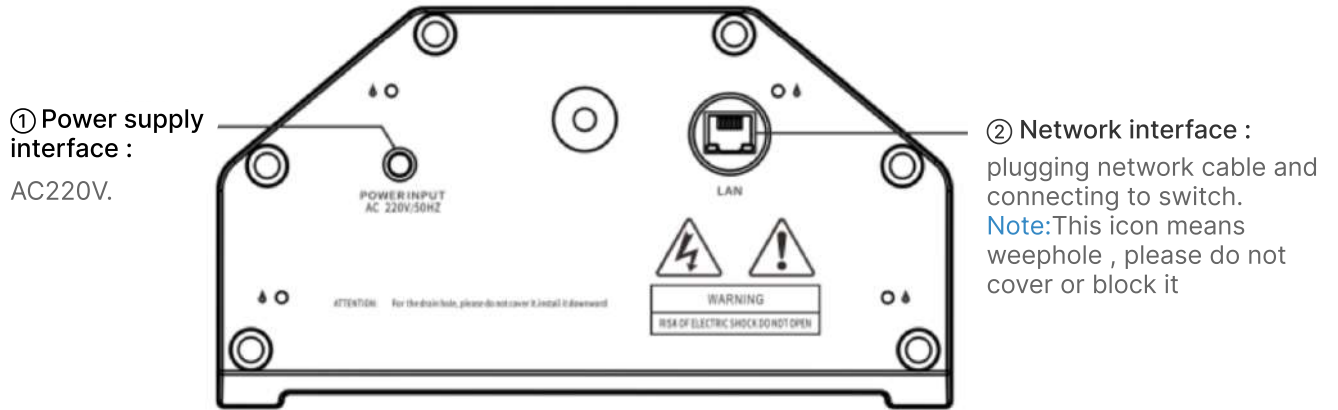
Mounting Method:	Surface-mounted
Installation Environment:	Dry Indoor Locations Only
Operating Temperature:	-20°C~+55°C (-4°F~+131°F)
Operating Humidity:	10%-90% RH non-condensing
Shell Color&Material:	White&Aluminium Alloy
Net Color&Material:	White&Steel
Net Surface Treatment:	Powder Spraying
Bracket Material:	Steel
Product Dimensions:	227×125×510mm、 227×125×710mm、 227×125×1110mm
Product Weight:	5.1kg、 8.4kg 、 13.55kg
Product Warranty:	2 Years Limited

ACCESSORIES

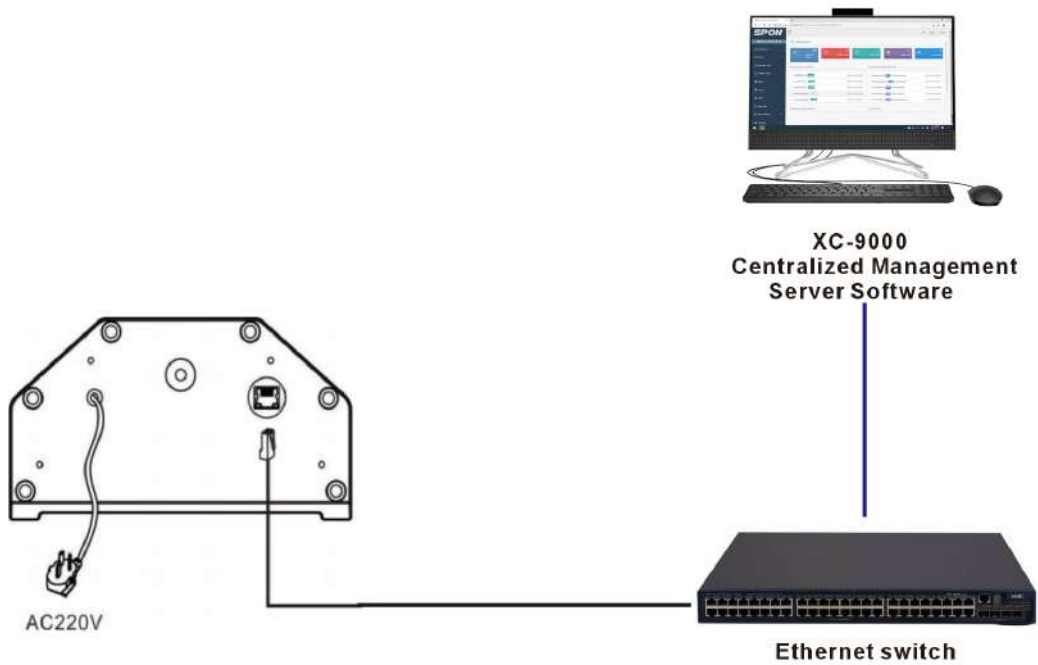
STANDARD ACCESSORIES

- 1×Quick Installation Guide
- 1×Power Adaptor(DC24V/2.75A)
- 1×Certificate and warranty
- 1×Rectangular metal piece
- 2×L-type installation frame
- 2×Nut&Spring washers
- 1×Waterproof tail wire connector

PORTS DESCRIPTION



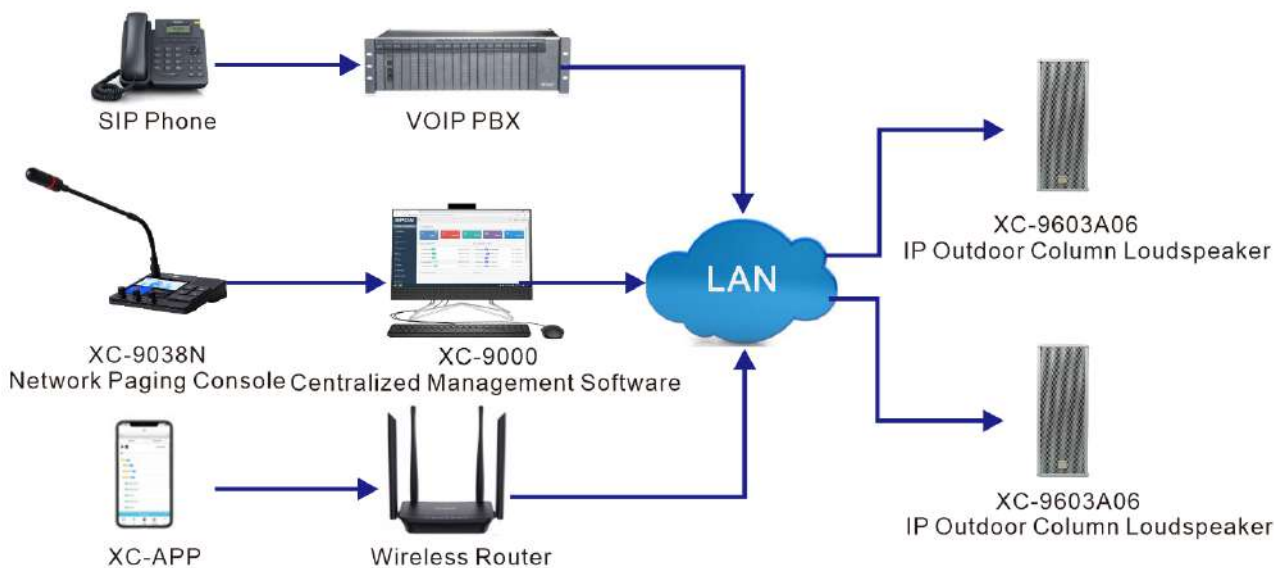
CONNECTION DIAGRAM



APPLICATION

Application 1

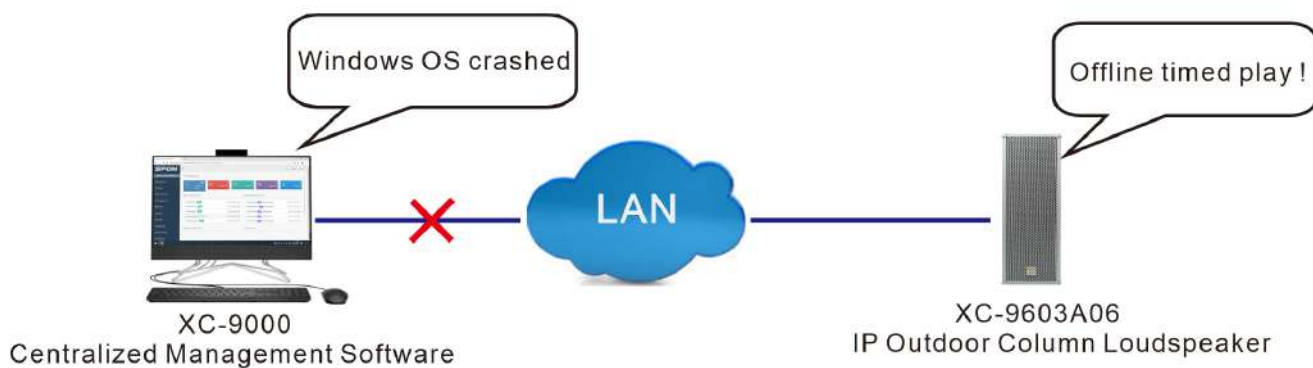
The IP Outdoor Column Loudspeaker XC-9603A03/06/12 can receive broadcasting from SPON management software、IP paging microphone、the third-party sip phone (Integrated with SPON software via SIP trunk).



Application 2

The IP Outdoor Column Speaker support offline broadcasting. When the speaker is offline, the scheduled ringing task set by the server software can be played regularly.

Note:Offline schedule task need to be imported into speaker’s FTP in advance.



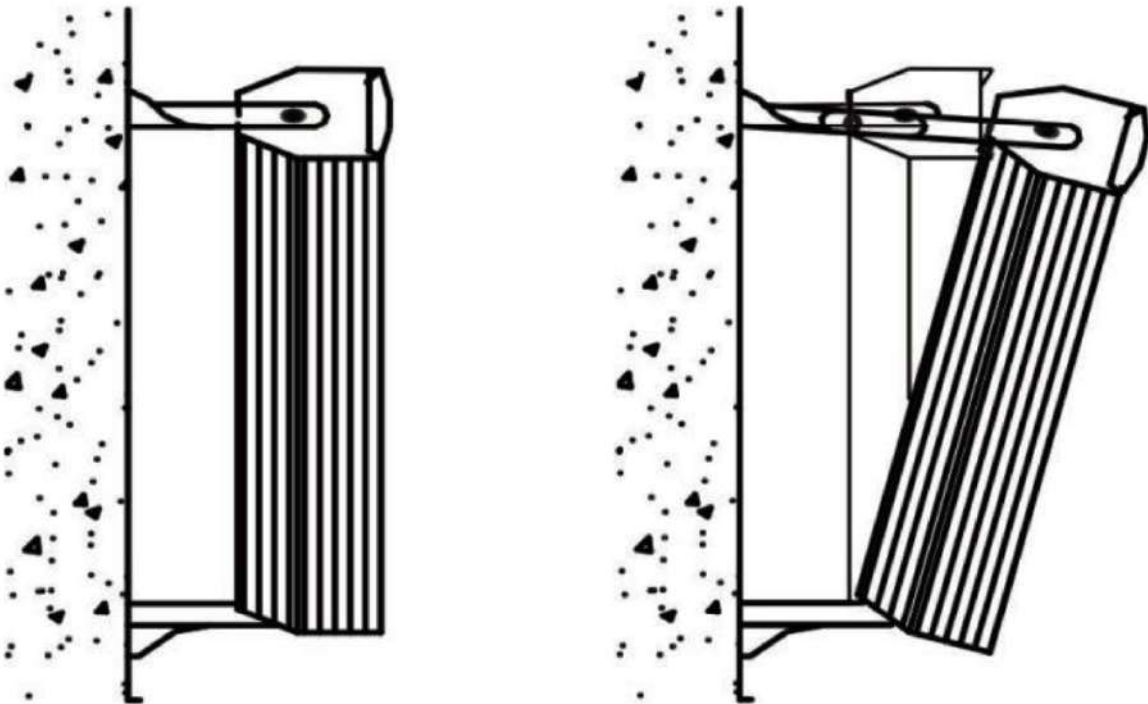
INSTALLATION

■ Installation instructions

Install three screws with a diameter of 8mm on the facade where the column speaker needs to be installed, install the bracket as shown in the figure above, and fix the sound column. If necessary, extend the upper bracket with the included tongue to adjust the depression angle of the column.

Note:

The installation method of this column speaker is vertical installation (horizontal installation is not allowed), the outlet ends of the power cord and network cable face down, and do not block the water leakage hole (see the silk screen on the bottom of the machine for the location of the water leakage hole). During installation, the strength of the mounting surface must be ensured to avoid the risk of falling.



CASE



SPON SPON Communications Co., LTD

Address: No.70, Nantang Road, High-Tech Zone, Changsha, China.

Mobile: +86 138 7314 3517

Email: inquiry@sponcomm.com **Tel:** +86 731 8557 0190



www.sponcomm.com