



XC-9610

Network Ceiling Speaker

SPON IP PoE Ceiling Speaker XC-9610 is a SIP compliant and multicast-capable PoE network audio device for public address and notification, it supports common network protocols for easy integration with SIP-compatible VOIP system. It is suitable for hotel, company and other indoor public areas that need simple wiring.



MAIN FEATURES

Performance and Encoding

- Employs a high-speed, industrial-grade dual-core (ARM+DSP) chip for superior processing power.
- Features versatile voice encoding with both narrowband (G.711a/u) and broadband (G.722) options for crystal-clear voice paging.



Connectivity & System Integration

- Supports receiving paging from SIP phones through 10 dedicated multicast addresses.
- Incorporates a multicast scalable function, efficiently saving SIP account resources.
- Fully compatible with standard SIP protocols for seamless integration with leading SIP PBX systems like Yeastar, Asterisk, and Cisco.

Audio Management & Network Functionality

- Facilitates background music, emergency paging, and alarm signals from the SPON management system.
- Features dynamic volume control that automatically adjusts based on ambient noise.
- Offers flexible deployment with PoE or PoE+ interface support.
- Equipped with remote management and online upgrading capabilities for ongoing system optimization.

SPECIFICATION

Power Parameters

Power Supply:	DC 24V/1A, PoE (IEEE802.3af), PoE+ (IEEE802.3at)
Standby Power Consumption:	≤3W
Rated Power Output:	20W(@DC 24V/1A Powered) 15W (@PoE Powered) 20W (@PoE+ Powered)

Audio Parameters

Audio Codec:	G.711A-Law, G.711μ-Law, G.722
Sensitivity:	88dB±3dB (1W, 1m)
Maximum SPL:	97dB±3dB
S/N (Signal-To-Noise) Ratio:	≥80dB
Audio Sampling & Bit Rate:	8kHz~44.1kHz, 16bit, 8kbps~320kbps
Frequency Response:	100Hz~18kHz

Network Parameters

Network I/F:	10BASE-T/100BASE-TX RJ45
Network Protocol:	SIP (RFC3261),FTP,HTTP,TCP/IP,UDP,ARP,ICMP,IGMP
Configuration Method:	Web Interface Or DevConfig Tool

Mechanical&Environment Properties

Mounting Method:	Ceiling-Mounted
Installation Environment:	Dry Indoor Locations Only
Operating Temperature:	-20°C~+50°C (-4°F~122°F)
Operating Humidity:	10%~90% RH Non-Condensing
Body Material:	ABS Composite Plastic
Color:	Off-White
Product Dimensions:	Φ213x165mm
Product Weight:	1.4KG
Packaging:	Carton Box
Packed Dimensions:	260×250×240mm
Packed Weight:	2.4KG
Product Warranty:	2 Years Limited

Accessories

1×2-Pin Pluggable Terminal Block Connector (3.81mm Pitch,AWG 26-16)

1×Waterproof Joint

1×Quick Installation Guide

1×QualityCertificate&Warranty Card

Compliance

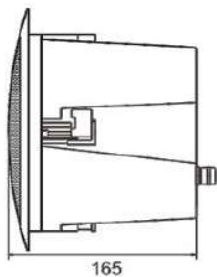
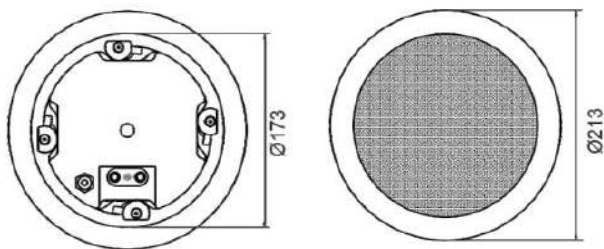
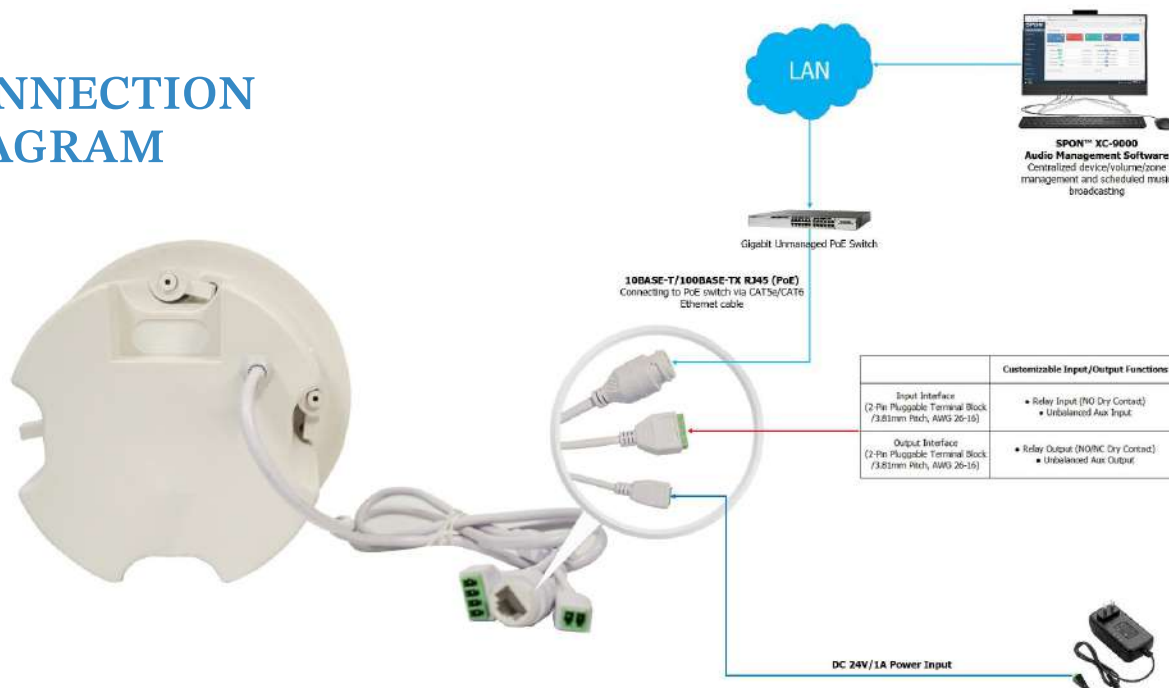
CE (EMC Directive 2014/30/EU)、CE (LVD Directive 2014/35/EU)

PORTS DESCRIPTION



- ① **Network Port:** To connect with Ethernet switch.
- ② **Reserved Port:** 1,2 Alarm Input , 3,4 Audio Input
- ③ **Power Port:** To connect with power supply.

CONNECTION DIAGRAM



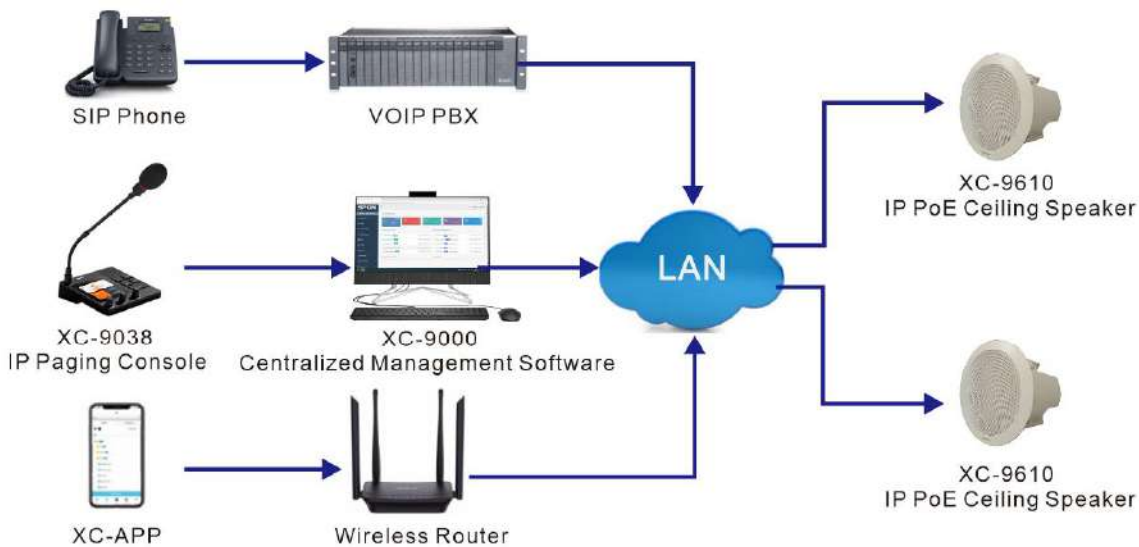
INSTALLATION

1. Drilling a hole, the size please refer to the dimension diagram.
2. Connecting the network cable with the IP Ceiling Speaker. (The network cable should be placed in the hole).
3. Placing the speaker in a suitable place to the hole, and ensure it is fixed well.

APPLICATION

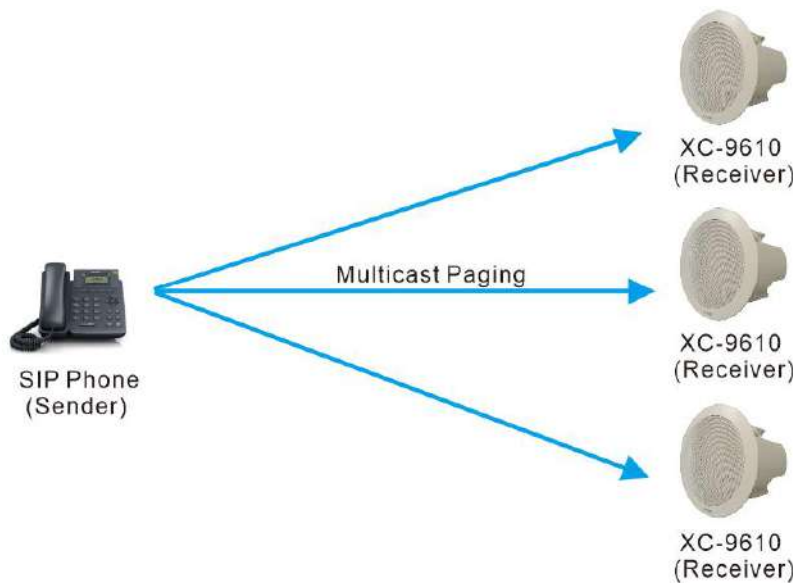
Application 1

The IP PoE Ceiling Speaker XC-9610 support SIP protocol which can be independently used as a sip endpoint to integrated with mainstream VOIP system for receiving sip call from SIP phone or SIP softphone ; Meanwhile , it also can receive broadcast from SPON management software 、 IP Paging Mic and XC-APP.



Application 2

The IP PoE Ceiling Speaker XC-9610 support paging from SIP phone by using multicast address , the multicast address and priority can be set on its webpage .

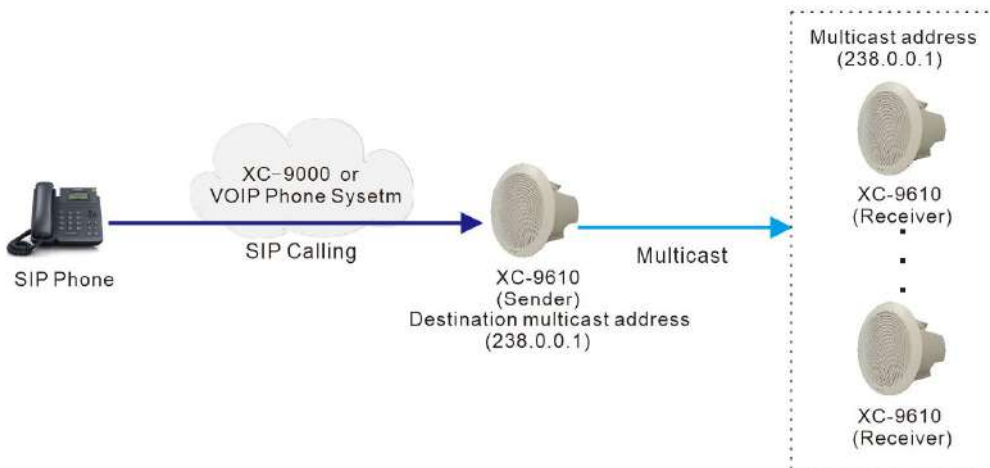


*No SIP registration required for speakers in a multicast

APPLICATION

Application 3

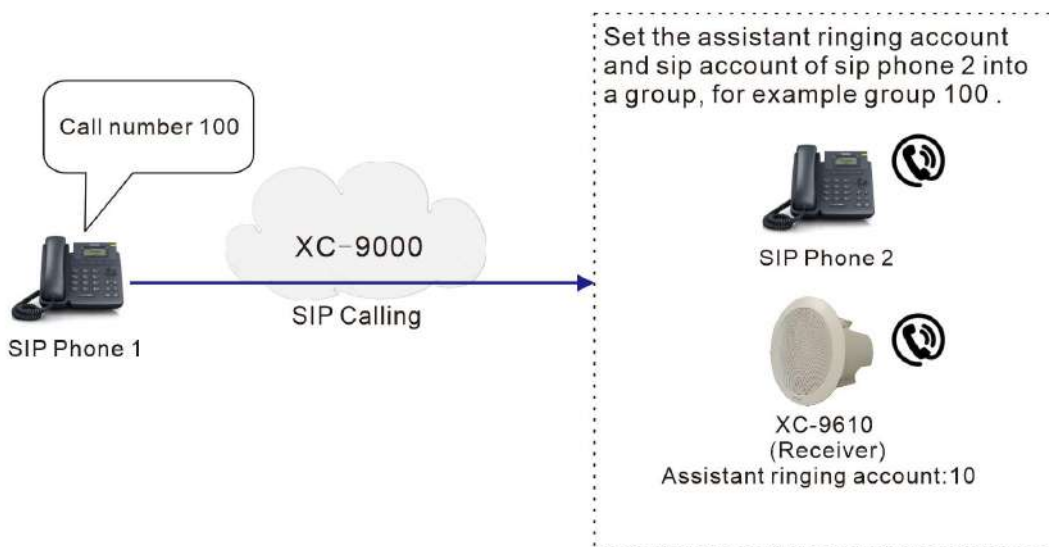
The IP PoE Ceiling Speaker XC-9610 support "Multicast scalable" function ,when SIP phone initiate call to one horn speaker which registered to VOIP system, the other speakers with same multicast address will simultaneously receive the sip calling from the SIP phone.



*Note: The receiver speaker no need to login to VOIP system

Application 4

The IP PoE Ceiling Speaker XC-9610 support "Loud ringing extension" function. The assistant ringing SIP account of horn speaker and the SIP phone can be put into a ringing group (set on XC-9000). When calling to group account, all terminals in the same group will ring. The ringing will be stopped after the call is answered by sip phone.



CASE



SPON SPON Communications Co., LTD

Address: No.70, Nantang Road, High-Tech Zone, Changsha, China.

Mobile: +86 138 7314 3517

Email: inquiry@sponcomm.com

Tel: +86 731 8557 0190



www.sponcomm.com