



XC-9621A03/A06

Network Outdoor BT Loudspeaker

SPON IP Outdoor Column Loudspeaker XC-9621A03/A06 is a versatile loud speaker. With an IPX5 rating, it can be used externally for applications such as public address, music streaming, pre-recorded message broadcast and scheduled announcements. It is mainly suitable for Park, Playground, outdoor plaza, etc outdoor environment.



MAIN FEATURES

Integrated Audio Features

- All-in-one design integrating network audio decoding, digital amplification, and a loudspeaker unit.
- External audio source connectivity via a line input interface.
- Mobile phone Bluetooth compatibility for music streaming.

Connectivity & Control

- Remote volume adjustment through server software.
- Standard SIP protocol compatibility for seamless integration with leading SIP PBX systems (Yeastar, Asterisk, Cisco, etc.).
- Web-based parameter configuration and remote firmware upgrade support.

Efficient Power & Setup:

- POE (Power Over Ethernet) power supply, ensuring a simplified and flexible installation process.

SPECIFICATION

Power Parameters

Power Supply:	DC24V ,1.5A(XC-9621A03)or POE; DC24V, 2.7A(XC-9621A06)
Standby Power Consumption:	≤2W
Power Output:	30W/60W(DC24V) , 15W(POE)

Audio Parameters

Audio Codec:	G711u/a 、 G722 (ADPCM)、 PCM、 MP3
Audio Sampling & Bit Rate:	8kHz~44.1kHz, 16bit, 16kbps~320kbps
S/N:	≥83dB
Frequency Response:	45Hz-18KHz (±3dB)
Sensitivity:	87dB (1M/W)

Network Parameters

Network I/F:	10BASE-T/100BASE-TX RJ45
Network Protocol:	TCP/IP(IPv4)、 UDP、 HTTP、 SIP
Configuration Method:	Web Interface

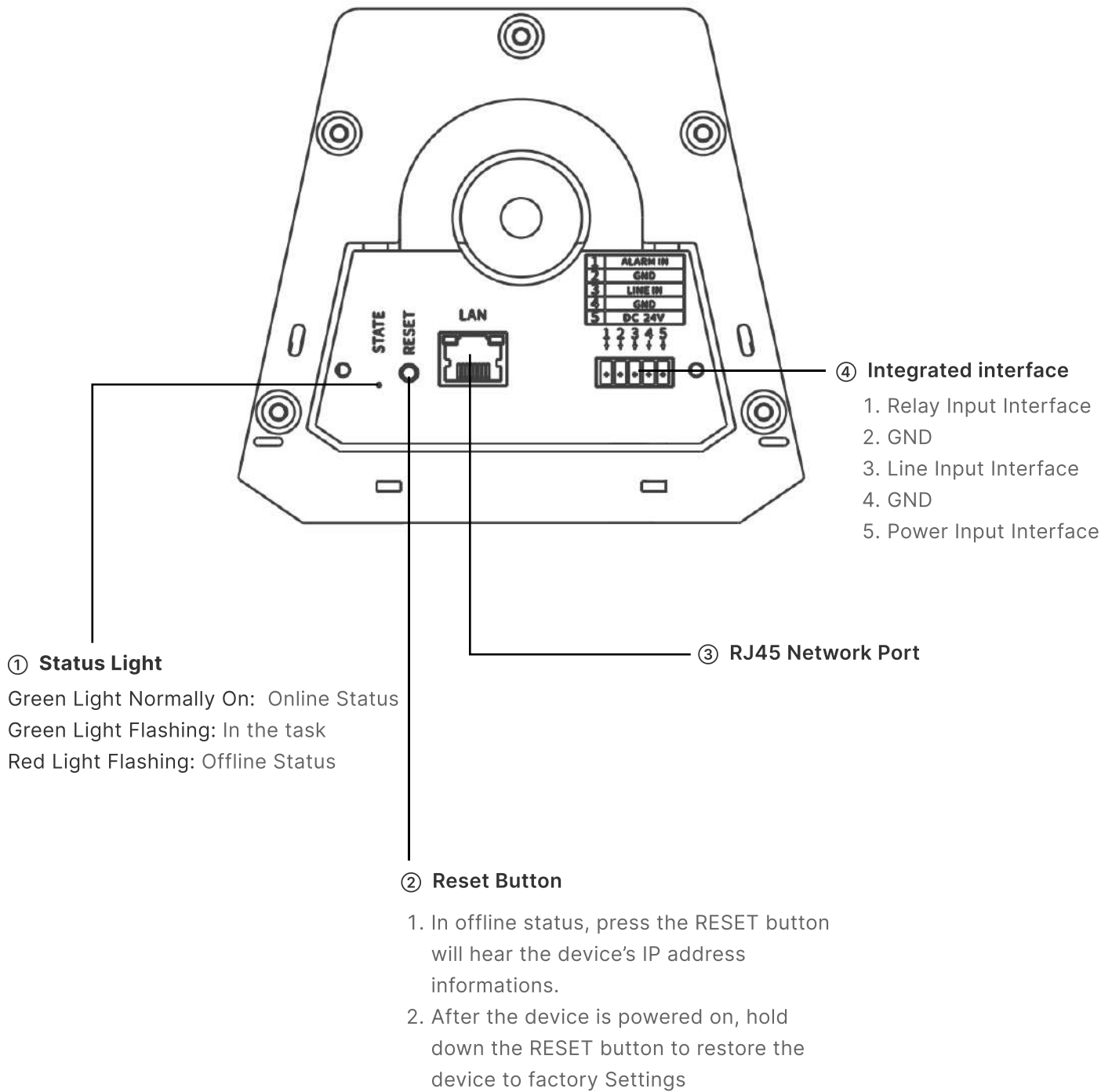
Mechanical&Environment Properties

Mounting Method:	Wall-mounted
Installation Environment:	Outdoor Locations
Operating Temperature:	-10°C~+55°C
Operating Humidity:	<90% RH non-condensing
Shell Color&Material:	White&Aluminium Alloy
Net Color&Material:	White&Steel
Net Surface Treatment:	Powder Spraying
Bracket Material:	Steel
Product Dimensions:	296*140*130mm(XC-9621A03), 436*140*130mm(XC-9621A06)
Product Weight:	1.75kg(XC-9621A03) ,2.65kg(XC-9621A06)
Product Warranty:	2 Years Limited

Accessories

1×Quick Installation Guide
1×Certificate and warranty
1×Extension Board
3×Screw(M8*14)
2×Mounting Bracket
1×Terminal(3.5-5P)
1×Screw Nut(M8)
1×Gasket(M8)

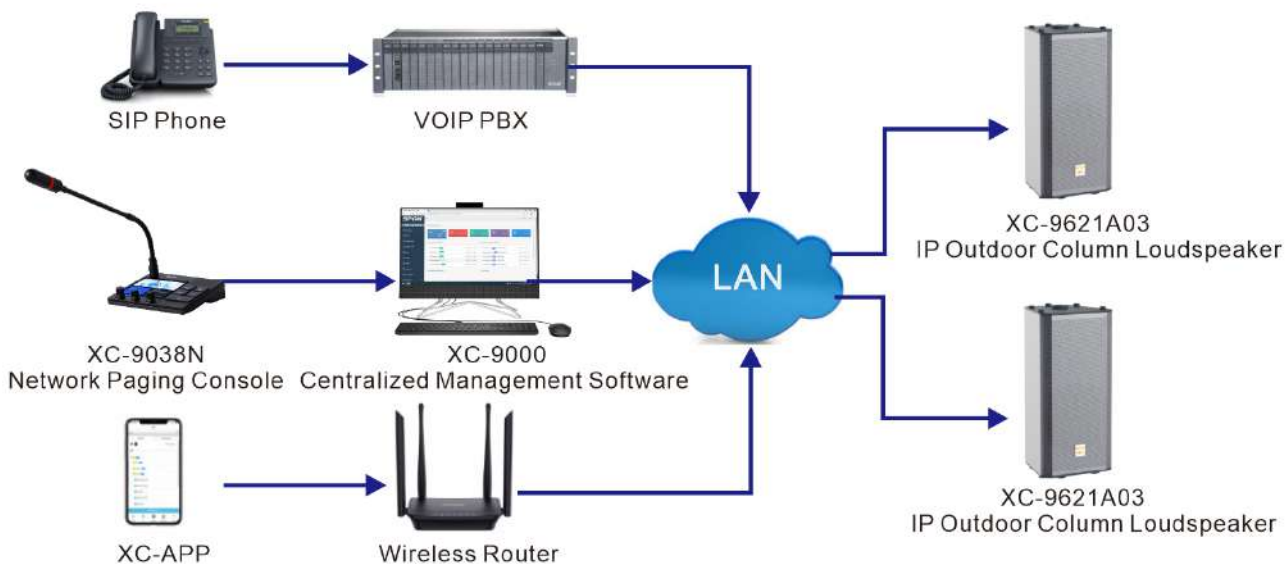
PORTS DESCRIPTION



APPLICATION

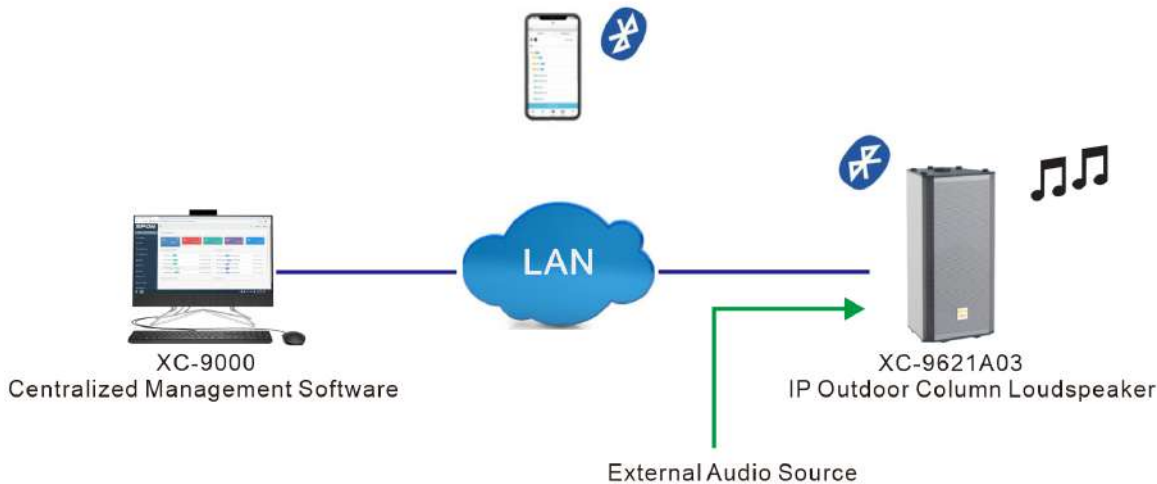
Application 1

The IP Outdoor Column Loudspeaker XC-9621A03 can receive broadcasting from SPON management software、IP paging microphone、the third-party sip phone (Integrated with SPON software via SIP trunk).

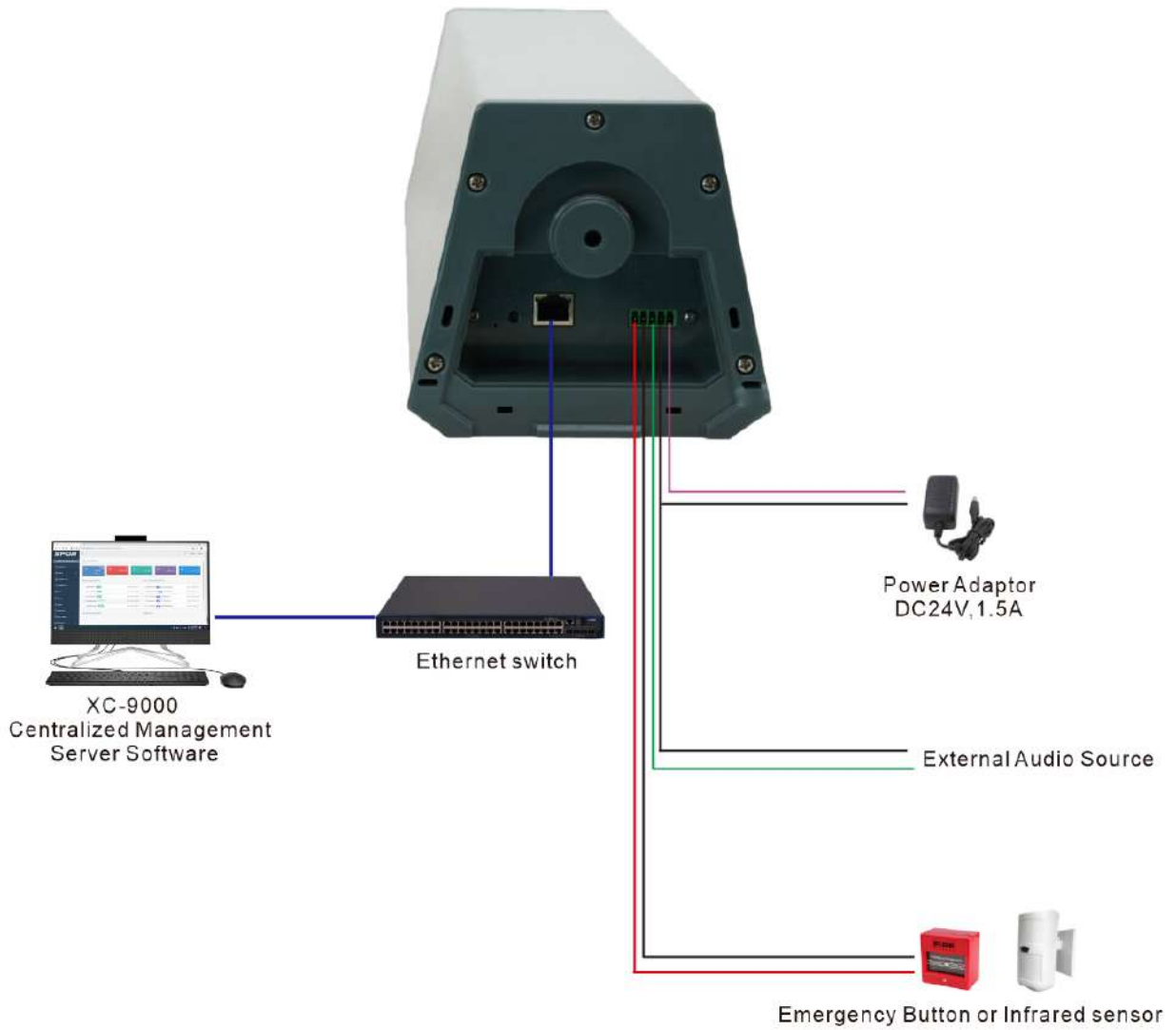


Application 2

The IP Outdoor Column Speaker XC-9621A03 support multiple audio source broadcasting mode: to playback audio streaming from Management software、Mobile phone(blueetooth)、Line input interface.



CONNECTION DIAGRAM



INSTALLATION

Installation instructions

Install three 8mm diameter screws at the appropriate position on the facade where the speaker is to be installed, install the bracket as shown in the figure above, and secure the speaker. If necessary, use the attached tongue to extend the upper bracket to adjust the pitch Angle of the speaker.

Note:

The speaker shall be installed vertically (transverse installation is not allowed), with the outlet end of the power cable and network cable facing down, and do not block the drain hole (see the silk screen logo at the bottom of the machine for the location of the drain hole). The strength of the mounting surface must be ensured during installation to avoid falling risk.

