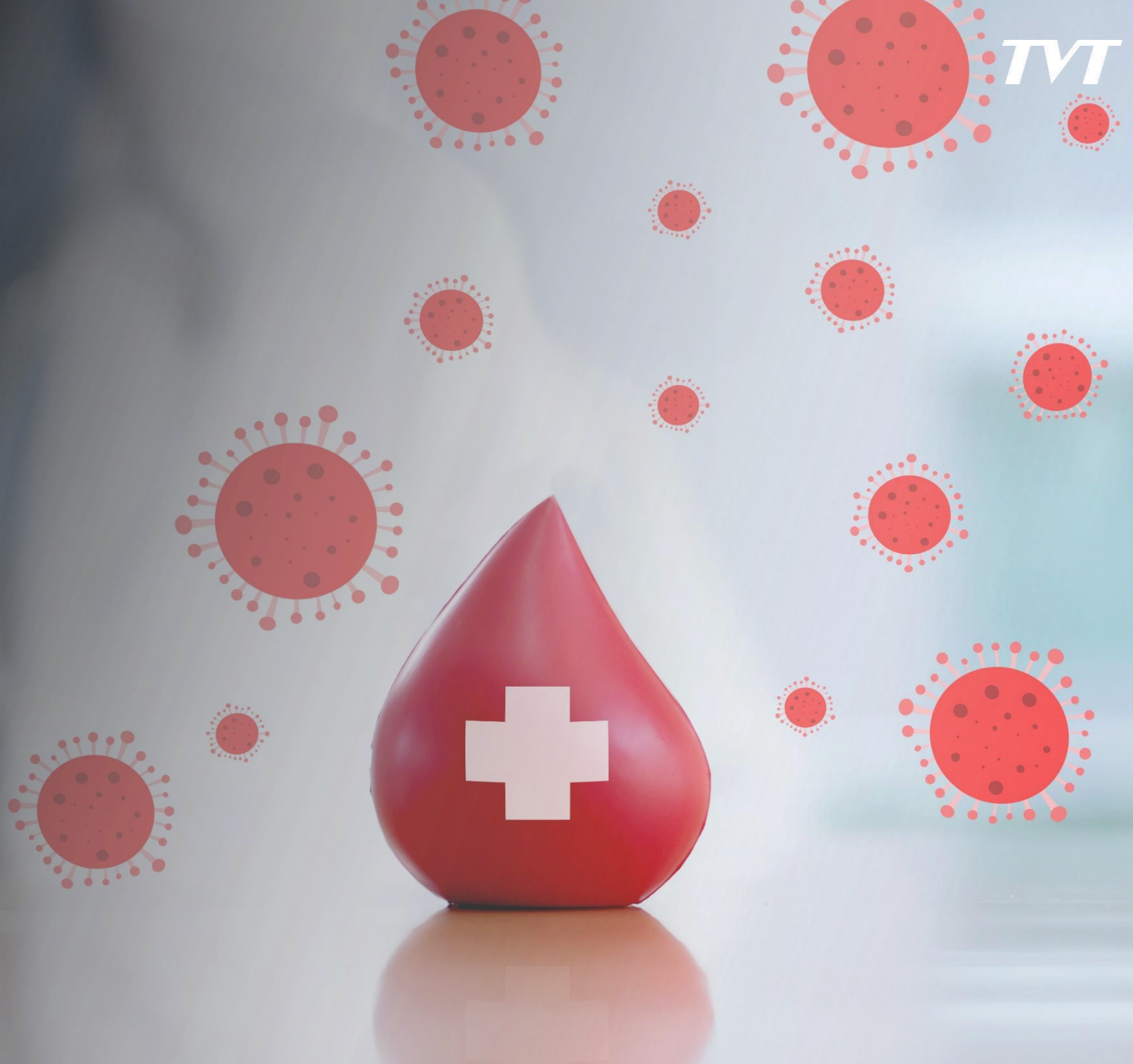


Smart Hospital Solution





Too Many Systems

- Vehicle parking, CCTV monitoring, emergency system, security TV wall, access control for rooms ...
- Traditionally, each single module requires one independent software, which becomes headache for system operator.



Access Control Management

- Key sections only for authorized personnel, such as X-ray room, medicine warehouse etc.
- Manage different permission for normal vehicle and ambulance



Security Optimization

- Emergency event needs fast and accurate reaction. However, medical staff sitting in the office normally has limited info of the situation on-site.
- 24x7 monitoring and key video footage retention for legal exemption.

Solution Overview



Entrance and Exit

Scenario and pain points:

- Operator needs to manage parking lot base on how many spaces available
- Authorized vehicle such as ambulance and police should be able to enter without waiting

Highlights:

- Support parking lot system for auto or manual barrier control
- Support white list, block list and customizable rules for special license plate
- E-map for vehicle trajectory visualization



TD-9843A3BH-LR



NVMS 2.0

Key Room

Scenario and pain points:

- Restricted area such as operating room, medicine warehouse should only be available for authorized personnel.
- Touchless authorization is a better way from health perspective

Highlights:

- Can build up several permission groups, flexible permission management for different sensitive areas
- Support touchless authorization with face recognition, reduce virus transmission
- Support facial recognition with mask, medical staffs no need to mask off



TD-E2223

Emergency Exit

Scenario and pain points:

- Cars parked at random at emergency exits, making it impossible for ambulances to get through

Highlights:

- Illegal Parking detection function can detect illegally parked vehicles and alert security guards to drive them away



TD-9442E3B-A

Patient Care

Scenario and pain points:

- When inpatient encounter an emergency, they need to be able to contact medical staff within seconds.
- Sometime when emergency happens, inpatient lose their ability to talk after pressing on emergency button. Difficult for medical staff to evaluate the situation.

Highlights:

- Support one key to call, inpatient just need to press on the button and wait for help
- Support two-way talk with real-time image, which helps medical staff quickly understand the on-site situation
- Even when medical staff is temporary not in front of the monitor, they can still receive emergency call from phone APP, avoid missing critical info



TD-E3110



TD-E2137

Perimeter Monitoring

Scenario and pain points:

- Hospital requires high level of security, and difficult for security guards to monitor every corner 24 hours a day.

Highlights:

- Active deterrence camera can trigger onsite siren and light warning proactively when intruder detected at night
- Embedded with multiple AI. Able to use a same camera for both patient flow statistics analysis and perimeter protection



TD-9443C2-PA

Security Center

Scenario and pain points:

- Difficult to have a comprehensive system to handle security event, emergency event as well as to manage cars driving in and out.
- Needs multiple screens to view hundreds of channels

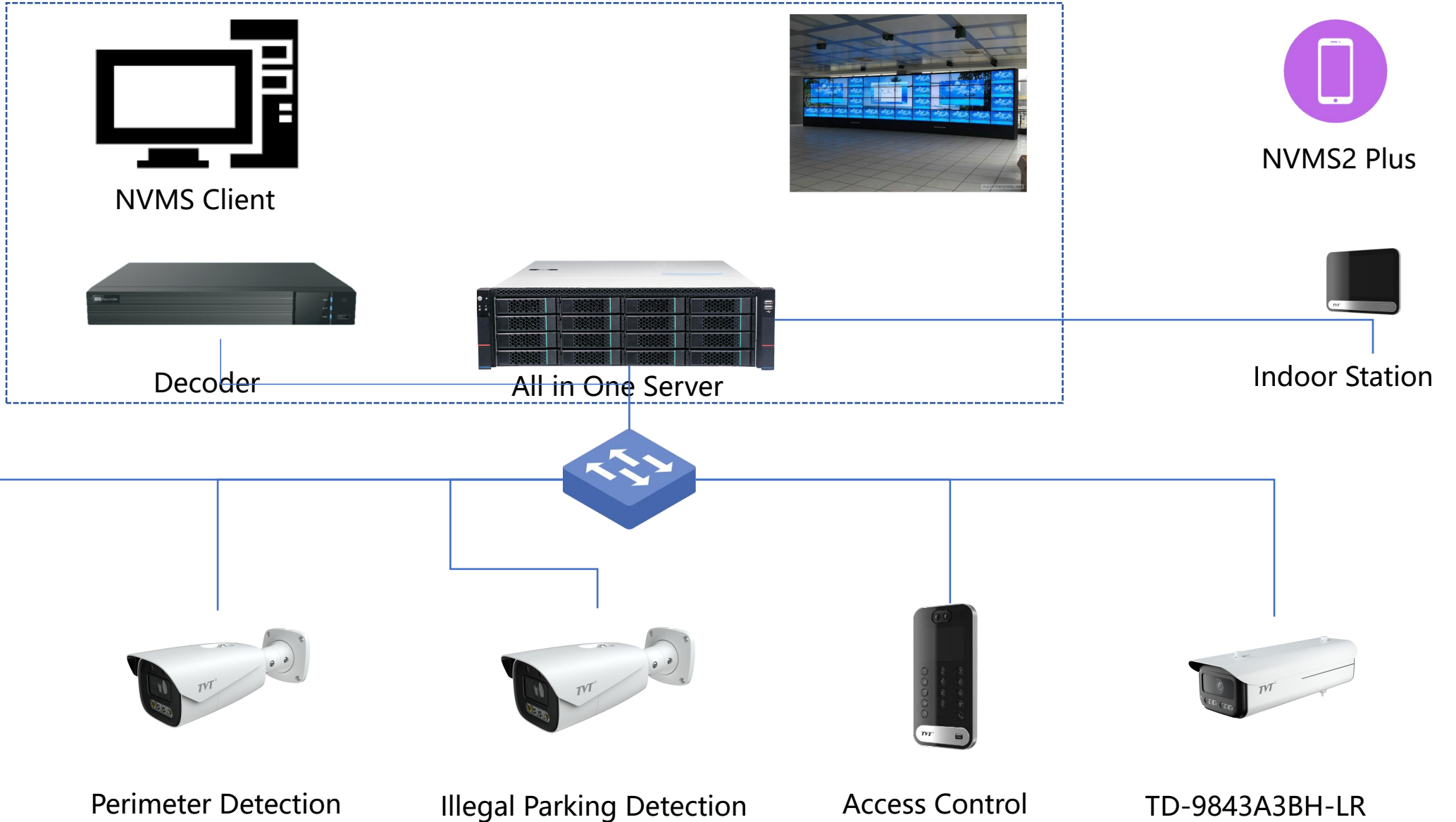
Highlights:

- All-in-one VMS system for video monitoring, parking lot management and alarms.
- Power decoding ability with 4 built-in HDMI interface for TV wall. Key events will trigger full screen pop-up video to raise attention.
- Centralized storage to backup key video footage, avoid losing the most important data



TD-A708M1-A0

Solution Topology





TD-9843A3BH-LR

- 4MP (2592×1520) @30fps
- WDR: 120dB
- Support license plate detection and recognition
- 1CH audio input; 1CH audio output
- 2CH alarm input; 2CH alarm output
- CVBS output
- IR distance: up to 120m
- RS485/RS232/Wiegand
- ANPR Distance 3~30 m
- IP67



TD-9443C2-PA

- 4MP (2592×1520) @30fps
- Smart supplement light
- White/IR distance: 30~50m
- Human/vehicle classification
- 1CH audio input; 1CH audio output
- 2 CH alarm input; 2CH alarm output
- Light / Audio alarm
- Multiple AI
- IP66



TD-9442E3B-A

- 4MP(2592 x 1520)
- WDR:120dB
- IR distance: 30~50m
- 1CH audio input; 1CH audio output; 1CH built-in MIC
- 1CH alarm input; 1CH alarm output
- People loitering detection
- Illegal parking detection
- Video metadata
- Dual system backup



TD-E3110

- 2MP(1920 x 1080)@30fps
- Noise suppression and echo cancellation
- **Support 2.4G WIFI&POE**
- One-click alarm
- **Two way audio**
- Support Mifare card /Desfire card/FM1208 Card/Gicard
- Up to **3000** cards database



TD-E2137

- 7 inch IPS touch screen
- Support 2.4G WIFI&POE
- Max support access 16 CH camera
- 8CH zone alarm access function
- Supports snapshot when calling via door station (micro SD card required)
- A maximum of 6 indoor stations can be installed in the same room
- Open the door remotely
- Support SD Card,up to 256G



TD-E2223

- 3.5 inch TFT screen
- 2MP (1920×1080)
- **Built-in IC card reader**
- **Multiple door opening modes**
- **Face liveness detection**
- 2CH door lock; 2CH door contact
- 1CH built in MIC; 1CH built in speaker
- 2CH alarm input; 1CH alarm output
- **10000 face database**
- **RS485 / Wiegand**
- IP67



TD-A616E-E

- High-performance X86 hardware platform, stable and reliable
- 4 memory card slots, up to 64GB DDR4-1866/2133MHz ECC
- 12Gbps SAS Expander, 12Gbps RAID card (RAID 0, 1, 5, 6 supported)
- 550W 1+1 redundant power supply
- 16 *3.5 inch hot-pluggable HDD slots, up to 256TB
- Support up to 20,000 CH management
- Support manage up to 32 transfer server & storage server
- Up to 700Mbps incoming, 700Mbps recording and 96Mbps playback & live view



TD-1204D

- 4*HDMI output@1080P; HDMI1 supports 8K
- Decoding Capability:
 - 4CH 16MP@30fps
 - 8CH 8MP@30fps
 - 12 CH 5MP@30fps
 - 20CH 3MP@30fps
 - 32CH 1080P@30fps
- Maximum of 64 decoders can be manageable
- Support merge, window opening, roaming

Q&A

