

Smart Bank Solution



B A B A K



Security protection

- Full coverage with no blind spots, high-definition real-time monitoring day and night
- Identify suspicious vehicles and individuals, detect potential threats, and issue timely warnings
- Quickly and efficiently search and locate critical footage during emergencies
- Backup critical footage



Loss Prevention

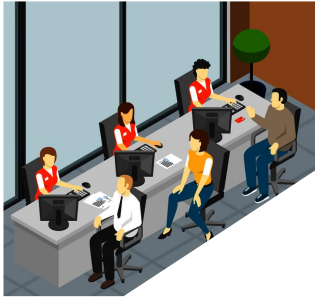
- Deter suspicious individuals, prevent robbery and crime
- Prevent illegal transactions using stolen identities
- Prevent internal fraud and embezzlement of customer funds
- Prevent internal theft by employees



Optimize business operation

- Optimize resource utilization by adjusting operating hours and staffing based on traffic analysis
- Analyze customer behavior to improve service quality and satisfaction
- Record transaction processes to handle customer disputes
- Monitor wait times in queuing areas to improve service efficiency

Solution Overview



Outdoor area



Scenario and pain points:

Bank Surroundings Monitoring:

Provide 24/7 high-definition monitoring for the bank surroundings, even in extremely low light conditions at night.

Highlights:

- 360° seamless monitoring
- Sound and light alarm deterrence
- Automatic smart tracking

TD-8543IE3N(PE/25M/AR30)

Entrance and Exit



TD-9742A3-PC



TD-9545E3B-A

Scenario and pain points:

Facial Recognition:

Identify VIP customers to provide them with timely and professional services

People Flow Statistics:

Track the daily flow of people entering and exiting the bank, calculate the average customer revenue, and understand the operational status.

Highlights:

- High-definition rapid facial recognition
- flow statistics for multiple entrances and exits

Lobby and queuing area



TD-95A8E3B



TD-9545E3B-A

Scenario and pain points:

Waiting Area Monitoring:

Monitor the number of people waiting and the duration of their wait in the waiting area. Assess staff efficiency to improve the user experience.

Overall Monitoring:

Wide-area, seamless monitoring.

Highlights:

- Range area monitoring
- Overtime waiting alerts

ATM area



TD-9825PH1



TD-9545E3B-A

Scenario and pain points:

Identification of Unusual Customers:

Automatically identify the facial information of the person withdrawing money in case of identity fraud.

Transaction Recording:

Record the transaction process. It facilitates subsequent investigation and recovery of the stolen assets.

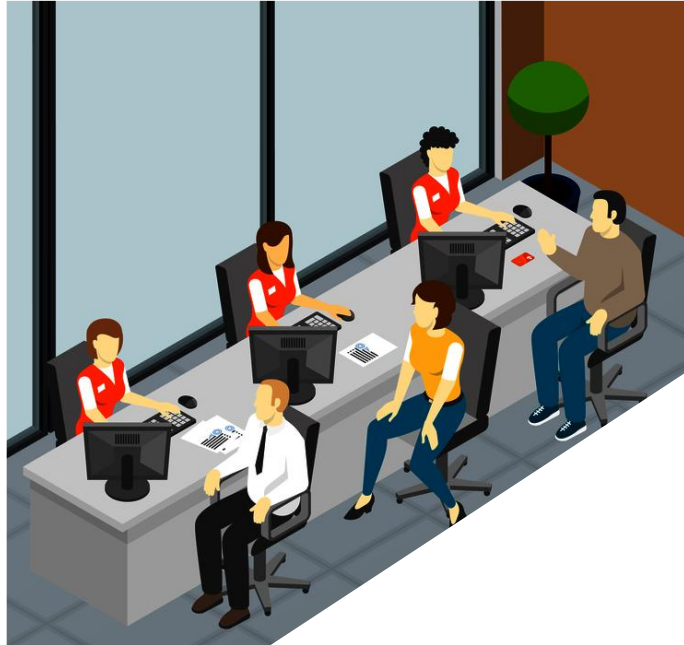
Risk Warning:

Issue a warning if suspicious individuals loiter around the ATM machine without operating it, and conduct a security check.

Highlights:

- Hidden cameras and not easily discovered
- Overtime loitering alert

Counter area



TD-9544S4-C

Scenario and pain points:

Transaction Recording:

High-definition video and audio recording to accurately capture the transaction process and content, facilitating dispute resolution.

Customer Satisfaction Observation:

Analyze customer tone and expressions to gauge their satisfaction with the service.

Prevention of Internal Theft:

Prevent cashiers from engaging in theft.

Highlights:

- HD video and audio recording

Vault area



TD-E2228



Scenario and pain points:

Access control:

Prevent non-employees from entering and exiting offices freely, and restrict unauthorized personnel from accessing restricted areas.

Highlights:

- Support for multiple verification methods: facial recognition, ID cards, passwords.

Control center



A708 series

Scenario and pain points:

Real-time global monitoring:

Real-time monitoring of various video channels and prompt response to alarm messages.

Video recording storage backup:

For full-channel monitoring, video recordings need to be stored. Additionally, for critical locations such as fire prevention areas and counters, video backups are necessary to prevent loss.

Highlights:

- Support for edge storage and central storage, with RAID support.
- Strong decoding capabilities for high-definition video decoding output.
- 1000 channels management
- 4 HDMI video output with high decoding capability

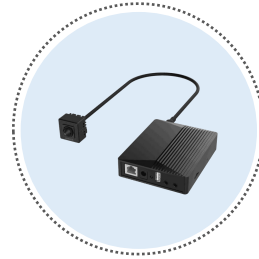
System Topology





TD-8543IE3N
(PE/25M/AR30)

- 4MP (2560×1440)@30fps
- IR distance:300~350m
- **360°endless pan range**
- **Pan speed: configurable, 0.1~360°/s**
- **Zoom speed: 3.6s**
- **Tilt speed: configurable, 0.1°~210°/s**
- **Smart tracking**
- 1CH alarm input,1CH alarm output
- 1CH audio input, 1CH audio output
- **IP67,IK10, 6KV surge protection**



TD-9825PH1

- 2MP (1920 x 1080)
- FOV: 104°, 59°, 117°
- 120dB
- 1CH audio input, 1CH audio output
- 8CH alarm input, 4CH alarm output
- Human / vehicle classification
- **Face detection, face capture**
- **Dimension: 31.6*30.4*30.4(mm)**



TD-9742A3-PC

- 4MP(2560 x 1440)
- WDR: 120dB
- 2CH built-in MIC ;1 CH built-in Speaker; 1CH audio input; 1CH audio output
- 1CH alarm input; 1CH alarm output
- Counts people entering and exiting separately
- **Supports children counting**
- **Target height filtering**
- Daily/monthly/annual report
- IP66



TD-95A8E3B

- (4000×3000) @30fps
- IR distance: 10~ 20m
- Three different image mode
- CVBS video output
- 1CH alarm input, 1CH alarm output
- Installation: Wall mounting, ceiling mounting, desktop
- **Crowd density detection**
- **Heat map**
- **Target counting**
- **IP67**



TD-9545E3B-A

- 4MP(2592 x 1520)
- WDR:120dB
- IR distance: 30~50m
- 1CH audio input; 1CH audio output; 1CH built-in MIC
- 1CH alarm input; 1CH alarm output
- **People loitering detection**
- **Video metadata**
- **Dual system backup**



TD-9544S4-C

- 4MP (2560 × 1440)
- White LED distance: 20~30m
- IR distance: 20~30m
- 1CH audio input; 1CH built-in MIC
- **Smart motion detection**
- **Intelligent light supplement**
- Line crossing/Region intrusion
- Human/vehicle classification
- **Dual system**
- **IP 67**



TD-E2228

- 8 inch touch screen
- 2MP (1920×1080)
- **Built-in IC card reader**
- **Multiple door opening modes**
- **Face liveness detection**
- 1CH door lock; 1CH door contact
- 1CH built in MIC; 1CH built in speaker
- 2CH alarm input; 2CH alarm output
- **40000 face database**
- **RS485 / Wiegand**
- IP66



TD-3332H4-16P-B2

- Resolution:12MP/9MP/8MP/6MP/5MP/4MP/3MP/1080P/1280×1024/960P/720P/960H/D1/CIF
- **16CH POE port**
- Bandwidth: **320Mbps/256Mbps** (incoming/outgoing)
- HDD Interface: SATA × 4, max 10T for each HDD
- E-SATA interface: 1
- Decoding Capability :1CH 12MP/4CH 1080P
- Alarm: 16CH alarm input, 4CH alarm output
- **AI by NVR: 2CH**



TD-A708M1-A0

- ARM platform, 8 core, 8G memory, 64GB EMMC
- **1000 CH** management, 256 devices access
- Raid 0/1/5/6/10
- **4 HDMI video output**, max preview of 104 channels; 1 VGA video output
- Decoding Capability: 3 × 16MP or 4 × 12MP or 6 × 8MP
- Bandwidth: **768 Mbps/ 256 Mbps** (incoming/outgoing)
- SATA3.0 x 8 ,up to 10TB per HDD
- Face Database: **50,000 face pictures**; Vehicle Database: **10,000 car plates**
- **Redundant power supply**
- Dual RJ45 10M/100M/1000M self-adaptive Ethernet ports
- **64** online client simultaneously

Loading

Q&A

